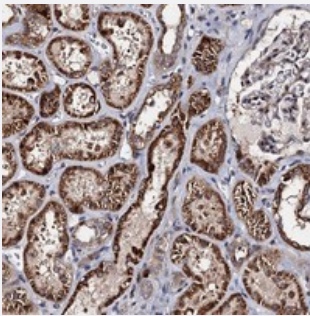


WWC3 polyclonal antibody

Catalog # PAB23452 Size 100 uL

Applications



Immunohistochemistry (Formalin/PFA-fixed paraffin-embedded sections)

Immunohistochemical staining of human kidney with WWC3 polyclonal antibody (Cat # PAB23452) shows strong cytoplasmic positivity in cells of tubules.

Specification

Product Description	Rabbit polyclonal antibody raised against recombinant WWC3.
Immunogen	Recombinant protein corresponding to amino acids of human WWC3.
Sequence	KRLERRARRISACLSDSLSDSGVFEPLTKRNDAEEPAYGDTASNGDPQIHVGLLRDSGSECL LVHVLQLKNPAGLAVKEDCKVHIRVYLPPLDSGT
Host	Rabbit
Reactivity	Human
Form	Liquid
Purification	Antigen affinity purification
Isotype	IgG
Recommend Usage	Immunohistochemistry (1:200-1:500) The optimal working dilution should be determined by the end user.
Storage Buffer	In PBS, pH 7.2 (40% glycerol, 0.02% sodium azide)

Storage Instruction

Store at 4°C. For long term storage store at -20°C.
Aliquot to avoid repeated freezing and thawing.

Note

This product contains sodium azide: a POISONOUS AND HAZARDOUS SUBSTANCE which should be handled by trained staff only.

Applications

- Immunohistochemistry (Formalin/PFA-fixed paraffin-embedded sections)

Immunohistochemical staining of human kidney with WWC3 polyclonal antibody (Cat # PAB23452) shows strong cytoplasmic positivity in cells of tubules.

Gene Info — WWC3

Entrez GeneID[55841](#)**Protein Accession#**[Q9ULE0](#)**Gene Name**

WWC3

Gene Alias

BM042, KIAA1280

Gene Description

WWC family member 3

Gene Ontology[Hyperlink](#)**Other Designations**

OTTHUMP00000022889