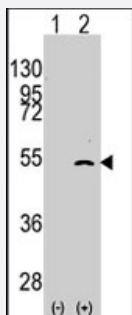


ELP3 polyclonal antibody

Catalog # PAB2345

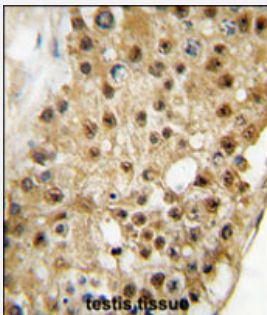
Size 400 uL

Applications



Western Blot (Transfected lysate)

Western blot analysis of ELP3 (arrow) using rabbit ELP3 polyclonal antibody (Cat # PAB2345). 293 cell lysates (2 ug/lane) either nontransfected (Lane 1) or transiently transfected with the ELP3 gene (Lane 2) (Origene Technologies).



Immunohistochemistry (Formalin/PFA-fixed paraffin-embedded sections)

Formalin-fixed and paraffin-embedded human testis tissue reacted with ELP3 polyclonal antibody (Cat # PAB2345), which was peroxidase-conjugated to the secondary antibody, followed by DAB staining. This data demonstrates the use of this antibody for immunohistochemistry ; clinical relevance has not been evaluated.

Specification

Product Description	Rabbit polyclonal antibody raised against synthetic peptide of ELP3.
Immunogen	A synthetic peptide (conjugated with KLH) corresponding to C-terminus of human ELP3.
Host	Rabbit
Reactivity	Human
Form	Liquid
Purification	Ammonium sulfate precipitation

Recommend Usage	Western Blot (1:1000) Immunohistochemistry (1:10-50) The optimal working dilution should be determined by the end user.
Storage Buffer	In PBS (0.09% sodium azide)
Storage Instruction	Store at 4°C. For long term storage store at -20°C. Aliquot to avoid repeated freezing and thawing.
Note	This product contains sodium azide: a POISONOUS AND HAZARDOUS SUBSTANCE which should be handled by trained staff only.

Applications

- Western Blot (Transfected lysate)

Western blot analysis of ELP3 (arrow) using rabbit ELP3 polyclonal antibody (Cat # PAB2345). 293 cell lysates (2 ug/lane) either nontransfected (Lane 1) or transiently transfected with the ELP3 gene (Lane 2) (Origene Technologies).

- Immunohistochemistry (Formalin/PFA-fixed paraffin-embedded sections)

Formalin-fixed and paraffin-embedded human testis tissue reacted with ELP3 polyclonal antibody (Cat # PAB2345), which was peroxidase-conjugated to the secondary antibody, followed by DAB staining. This data demonstrates the use of this antibody for immunohistochemistry; clinical relevance has not been evaluated.

Gene Info — ELP3

Entrez GeneID	55140
Protein Accession#	NP_060561;Q9H9T3
Gene Name	ELP3
Gene Alias	FLJ10422, KAT9
Gene Description	elongation protein 3 homolog (S. cerevisiae)
Gene Ontology	Hyperlink
Gene Summary	ELP3 is the catalytic subunit of the histone acetyltransferase elongator complex, which contributes to transcript elongation and also regulates the maturation of projection neurons (Creppe et al., 2009 [PubMed 19185337]).[supplied by OMIM]
Other Designations	elongation protein 3 homolog

Publication Reference

- [hELP3 subunit of the Elongator complex regulates the transcription of HSP70 gene in human cells.](#)

Han Q, Hou X, Su D, Pan L, Duan J, Cui L, Huang B, Lu J.

Acta Biochimica et Biophysica Sinica 2007 Jun; 39(6):453.

Application: ELISA, WB-Tr, Human, HEK 293T cells

- [Human Elongator facilitates RNA polymerase II transcription through chromatin.](#)

Kim JH, Lane WS, Reinberg D.

PNAS 2002 Feb; 99(3):1241.

Application: IF, IP, WB-Re, Human, HeLa cells, Recombinant protein

- [Genomic organization and isoforms of the mouse ELP gene.](#)

Ninomiya Y, Okada M, Kotomura N, Suzuki K, Tsukiyama T, Niwa O.

Journal of Biochemistry 1995 Aug; 118(2):380.

Application: WB-Ce, WB-Tr, Human, Mammalian cells

Disease

- [Amyotrophic lateral sclerosis](#)
- [Genetic Predisposition to Disease](#)