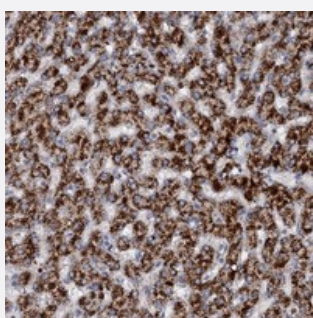


N4BP2L2 polyclonal antibody

Catalog # PAB23427 Size 100 uL

Applications



Immunohistochemistry (Formalin/PFA-fixed paraffin-embedded sections)

Immunohistochemical staining of human liver with N4BP2L2 polyclonal antibody (Cat # PAB23427) shows strong cytoplasmic positivity in hepatocytes at 1:200-1:500 dilution.

Specification

Product Description	Rabbit polyclonal antibody raised against recombinant N4BP2L2.
Immunogen	Recombinant protein corresponding to amino acids of human N4BP2L2.
Sequence	KLGPDSRGQWQMIFTSVAASEPGNNPEILTDKLLIGNEDFSPPPETMDSFIETNLFRSCLPQPDIPKNALESTKNKKRRKKRIFNLVPNFDLLGQSRIGVKEREKCDL
Host	Rabbit
Reactivity	Human
Form	Liquid
Purification	Antigen affinity purification
Isotype	IgG
Recommend Usage	Immunohistochemistry (1:200-1:500) The optimal working dilution should be determined by the end user.
Storage Buffer	In PBS, pH 7.2 (40% glycerol, 0.02% sodium azide)

Storage Instruction

Store at 4°C. For long term storage store at -20°C.
Aliquot to avoid repeated freezing and thawing.

Note

This product contains sodium azide: a POISONOUS AND HAZARDOUS SUBSTANCE which should be handled by trained staff only.

Applications

- Immunohistochemistry (Formalin/PFA-fixed paraffin-embedded sections)

Immunohistochemical staining of human liver with N4BP2L2 polyclonal antibody (Cat # PAB23427) shows strong cytoplasmic positivity in hepatocytes at 1:200-1:500 dilution.

Gene Info — N4BP2L2

Entrez GeneID[10443](#)**Protein Accession#**[Q92802](#)**Gene Name**

N4BP2L2

Gene Alias

92M18.3, CG005, FLJ36195, FLJ41089, FLJ43077, PFAAP5

Gene Description

NEDD4 binding protein 2-like 2

Gene Ontology[Hyperlink](#)**Other Designations**

92M18.3 (novel protein)|CG016|OTTHUMP00000018230|OTTHUMP00000042409|OTTHUMP0000042420|phosphonoformate immuno-associated protein 5|protein from BCRA2 region