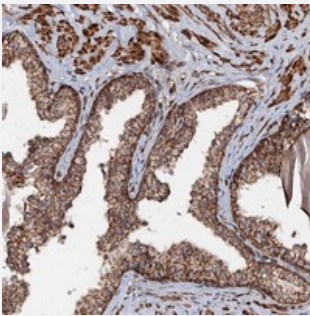


CEP76 polyclonal antibody

Catalog # PAB23424 Size 100 uL

Applications



Immunohistochemistry (Formalin/PFA-fixed paraffin-embedded sections)

Immunohistochemical staining of human prostate with CEP76 polyclonal antibody (Cat # PAB23424) shows strong cytoplasmic positivity in glandular cells at 1:20-1:50 dilution.

Specification

| | |
|----------------------------|---|
| Product Description | Rabbit polyclonal antibody raised against recombinant CEP76. |
| Immunogen | Recombinant protein corresponding to amino acids of human CEP76. |
| Sequence | PTNPDEPPVAEQPKPLYPYRTIGCVFNHQMFLGNCQPSDAVETCVFDLNDESKWKPMSEEAIKS VCAPGATTSLPPFPPLCASTIDASVTSNEIEMQLRLLVSEHRKDLGLTTVWED |
| Host | Rabbit |
| Reactivity | Human |
| Form | Liquid |
| Purification | Antigen affinity purification |
| Isotype | IgG |
| Recommend Usage | Immunohistochemistry (1:20-1:50) The optimal working dilution should be determined by the end user. |
| Storage Buffer | In PBS, pH 7.2 (40% glycerol, 0.02% sodium azide) |

Storage Instruction

Store at 4°C. For long term storage store at -20°C.
Aliquot to avoid repeated freezing and thawing.

Note

This product contains sodium azide: a POISONOUS AND HAZARDOUS SUBSTANCE which should be handled by trained staff only.

Applications

- Immunohistochemistry (Formalin/PFA-fixed paraffin-embedded sections)

Immunohistochemical staining of human prostate with CEP76 polyclonal antibody (Cat # PAB23424) shows strong cytoplasmic positivity in glandular cells at 1:20-1:50 dilution.

Gene Info — CEP76

Entrez GeneID[79959](#)**Protein Accession#**[Q8TAP6](#)**Gene Name**

CEP76

Gene Alias

C18orf9, FLJ12542, HsT1705

Gene Description

centrosomal protein 76kDa

Gene Ontology[Hyperlink](#)**Other Designations**

-