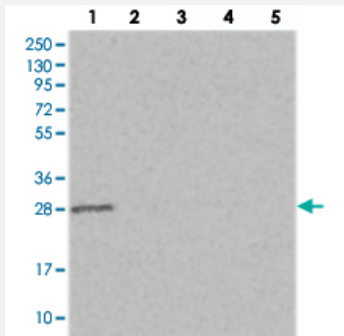


ERP29 polyclonal antibody

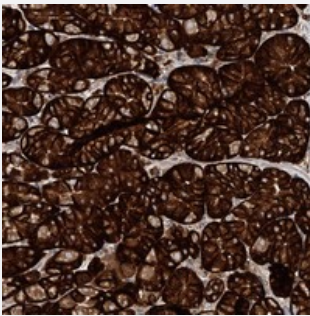
Catalog # PAB23419 Size 100 uL

Applications



Western Blot

Western blot analysis of Lane 1: RT-4, Lane 2: U-251 MG, Lane 3: Human Plasma, Lane 4: Liver, Lane 5: Tonsil with ERP29 polyclonal antibody (Cat # PAB23419).



Immunohistochemistry (Formalin/PFA-fixed paraffin-embedded sections)

Immunohistochemical staining of human stomach with ERP29 polyclonal antibody (Cat # PAB23419) shows strong cytoplasmic and membranous positivity in glandular cells.

Specification

Product Description	Rabbit polyclonal antibody raised against recombinant ERP29.
Immunogen	Recombinant protein corresponding to amino acids of human ERP29.
Sequence	SYPVFYLF RDGDFENPVPYTGAVKVGAIQRWLKGQGVYLGMPGCLPVYDALAGEFIRASGVEAR QALLKQGQDNLSSV
Host	Rabbit
Reactivity	Human
Form	Liquid

Purification	Antigen affinity purification
Isotype	IgG
Recommend Usage	Immunohistochemistry (1:50-1:200) Western Blot (1:250-1:500) The optimal working dilution should be determined by the end user.
Storage Buffer	In PBS, pH 7.2 (40% glycerol, 0.02% sodium azide)
Storage Instruction	Store at 4°C. For long term storage store at -20°C. Aliquot to avoid repeated freezing and thawing.
Note	This product contains sodium azide: a POISONOUS AND HAZARDOUS SUBSTANCE which should be handled by trained staff only.

Applications

- Western Blot

Western blot analysis of Lane 1: RT-4, Lane 2: U-251 MG, Lane 3: Human Plasma, Lane 4: Liver, Lane 5: Tonsil with ERP29 polyclonal antibody (Cat # PAB23419).

- Immunohistochemistry (Formalin/PFA-fixed paraffin-embedded sections)

Immunohistochemical staining of human stomach with ERP29 polyclonal antibody (Cat # PAB23419) shows strong cytoplasmic and membranous positivity in glandular cells.

Gene Info — ERP29

Entrez GeneID	10961
Protein Accession#	P30040
Gene Name	ERP29
Gene Alias	C12orf8, ERp28, ERp31, PDI-DB
Gene Description	endoplasmic reticulum protein 29
Omim ID	602287
Gene Ontology	Hyperlink

Gene Summary

This gene encodes a reticuloplasmin, a protein which resides in the lumen of the endoplasmic reticulum (ER). The protein shows sequence similarity to the protein disulfide isomerase family. However, it lacks the thioredoxin motif characteristic of this family, suggesting that this protein does not function as a disulfide isomerase. The protein dimerizes and is thought to play a role in the processing of secretory proteins within the ER. Alternative splicing results in multiple transcript variants encoding different isoforms. [provided by RefSeq]

Other Designations

endoplasmic reticulum luminal protein ERp28