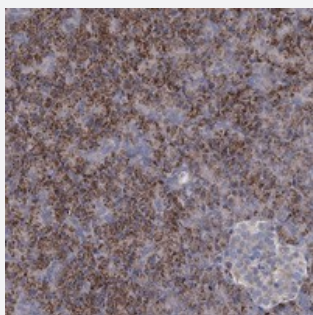


DCUN1D2 polyclonal antibody

Catalog # PAB23416 Size 100 uL

Applications



Immunohistochemistry (Formalin/PFA-fixed paraffin-embedded sections)

Immunohistochemical staining of human pancreas with DCUN1D2 polyclonal antibody (Cat # PAB23416) shows strong granular cytoplasmic positivity in exocrine glandular cells.

Specification

Product Description	Rabbit polyclonal antibody raised against recombinant DCUN1D2.
Immunogen	Recombinant protein corresponding to amino acids of human DCUN1D2.
Sequence	QFMACTQAGERTAICYLTQNEWRLDEATDSFFQNPDSLHRESMRNAVDDKKKLERLYGRY
Host	Rabbit
Reactivity	Human
Form	Liquid
Purification	Antigen affinity purification
Isotype	IgG
Recommend Usage	Immunohistochemistry (1:200-1:500) The optimal working dilution should be determined by the end user.
Storage Buffer	In PBS, pH 7.2 (40% glycerol, 0.02% sodium azide)
Storage Instruction	Store at 4°C. For long term storage store at -20°C. Aliquot to avoid repeated freezing and thawing.

Note

This product contains sodium azide: a POISONOUS AND HAZARDOUS SUBSTANCE which should be handled by trained staff only.

Applications

- Immunohistochemistry (Formalin/PFA-fixed paraffin-embedded sections)

Immunohistochemical staining of human pancreas with DCUN1D2 polyclonal antibody (Cat # PAB23416) shows strong granular cytoplasmic positivity in exocrine glandular cells.

Gene Info — DCUN1D2

Entrez GeneID	55208
---------------	-----------------------

Protein Accession#	Q6PH85
--------------------	------------------------

Gene Name	DCUN1D2
-----------	---------

Gene Alias	C13orf17, FLJ10704, FLJ20092
------------	------------------------------

Gene Description	DCN1, defective in cullin neddylation 1, domain containing 2 (S. cerevisiae)
------------------	--

Gene Ontology	Hyperlink
---------------	---------------------------

Gene Summary	defective in cullin neddylation 1
--------------	-----------------------------------

Other Designations	DCN1, defective in cullin neddylation 1, domain containing 2 OTTHUMP00000040669
--------------------	---