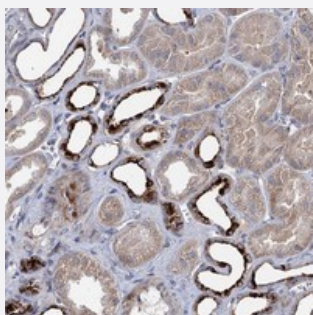


C11orf86 polyclonal antibody

Catalog # PAB23415 Size 100 uL

Applications



Immunohistochemistry (Formalin/PFA-fixed paraffin-embedded sections)

Immunohistochemical staining of human kidney with C11orf86 polyclonal antibody (Cat # PAB23415) shows strong cytoplasmic positivity in subsets of tubules at 1:50-1:200 dilution.

Specification

Product Description	Rabbit polyclonal antibody raised against recombinant C11orf86.
Immunogen	Recombinant protein corresponding to amino acids of human C11orf86.
Sequence	GTGLRSQSLREPRPSYGKLQEPWGRPQEGQLRRALSLRQGQEKSRSQGLERGTEGPDATAQE
Host	Rabbit
Reactivity	Human
Form	Liquid
Purification	Antigen affinity purification
Isotype	IgG
Recommend Usage	Immunohistochemistry (1:50-1:200) The optimal working dilution should be determined by the end user.
Storage Buffer	In PBS, pH 7.2 (40% glycerol, 0.02% sodium azide)
Storage Instruction	Store at 4°C. For long term storage store at -20°C. Aliquot to avoid repeated freezing and thawing.

Note

This product contains sodium azide: a POISONOUS AND HAZARDOUS SUBSTANCE which should be handled by trained staff only.

Applications

- Immunohistochemistry (Formalin/PFA-fixed paraffin-embedded sections)

Immunohistochemical staining of human kidney with C11orf86 polyclonal antibody (Cat # PAB23415) shows strong cytoplasmic positivity in subsets of tubules at 1:50-1:200 dilution.

Gene Info — C11orf86

Entrez GeneID	254439
---------------	------------------------

Protein Accession#	A6NJI1
--------------------	------------------------

Gene Name	C11orf86
-----------	----------

Gene Alias	FLJ22675
------------	----------

Gene Description	chromosome 11 open reading frame 86
------------------	-------------------------------------

Gene Ontology	Hyperlink
---------------	---------------------------

Other Designations	hypothetical protein LOC254439
--------------------	--------------------------------