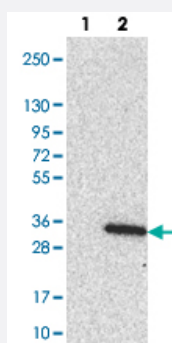


LRRC18 polyclonal antibody

Catalog # PAB23408 Size 100 uL

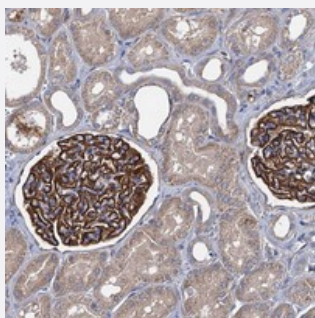
Applications



Western Blot (Transfected lysate)

Western blot analysis of Lane 1: Negative control (vector only transfected HEK293T lysate).

Lane 2: Over-expression lysate (Co-expressed with a C-terminal myc-DDK tag (~3.1 kDa) in mammalian HEK293T cells with LRRC18 polyclonal antibody (Cat # PAB23408).



Immunohistochemistry (Formalin/PFA-fixed paraffin-embedded sections)

Immunohistochemical staining of human kidney with LRRC18 polyclonal antibody (Cat # PAB23408) shows distinct positivity in cells in glomeruli.

Specification

Product Description	Rabbit polyclonal antibody raised against recombinant LRRC18.
Immunogen	Recombinant protein corresponding to amino acids of human LRRC18.
Sequence	IFIDSIRLENLYVVEEKDLCAACLRKQCQNARDNLNRIKNMATTTTPRKTFPNLISPNSMAKDSWEDWRIRL
Host	Rabbit
Reactivity	Human
Form	Liquid

Purification	Antigen affinity purification
Isotype	IgG
Recommend Usage	Immunohistochemistry (1:20-1:50) The optimal working dilution should be determined by the end user.
Storage Buffer	In PBS, pH 7.2 (40% glycerol, 0.02% sodium azide)
Storage Instruction	Store at 4°C. For long term storage store at -20°C. Aliquot to avoid repeated freezing and thawing.
Note	This product contains sodium azide: a POISONOUS AND HAZARDOUS SUBSTANCE which should be handled by trained staff only.

Applications

- Western Blot (Transfected lysate)

Western blot analysis of Lane 1: Negative control (vector only transfected HEK293T lysate).

Lane 2: Over-expression lysate (Co-expressed with a C-terminal myc-DDK tag (~3.1 kDa) in mammalian HEK293T cells with LRRC18 polyclonal antibody (Cat # PAB23408).

- Immunohistochemistry (Formalin/PFA-fixed paraffin-embedded sections)

Immunohistochemical staining of human kidney with LRRC18 polyclonal antibody (Cat # PAB23408) shows distinct positivity in cells in glomeruli.

Gene Info — LRRC18

Entrez GeneID	474354
Protein Accession#	Q8N456
Gene Name	LRRC18
Gene Alias	MGC34773, UNQ933, UNQ9338, VKGE9338
Gene Description	leucine rich repeat containing 18
Gene Ontology	Hyperlink
Other Designations	OTTHUMP00000019568