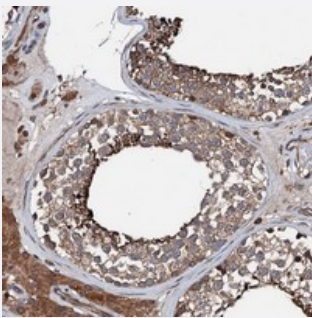


# FGD4 polyclonal antibody

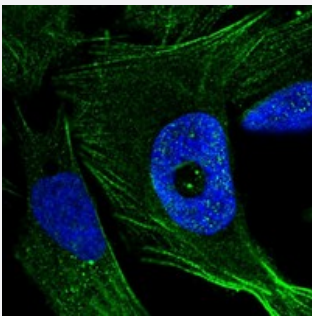
Catalog # PAB23406      Size 100 uL

## Applications



### Immunohistochemistry (Formalin/PFA-fixed paraffin-embedded sections)

Immunohistochemical staining of human testis with FGD4 polyclonal antibody (Cat # PAB23406) shows distinct cytoplasmic positivity in cells in seminiferous ducts.



### Immunofluorescence

Immunofluorescent staining of human cell line U-2 OS with FGD4 polyclonal antibody (Cat # PAB23406) at 1-4 ug/mL dilution shows positivity in cytoskeleton (actin filaments).

## Specification

Product Description	Rabbit polyclonal antibody raised against recombinant FGD4.
Immunogen	Recombinant protein corresponding to amino acids of human FGD4.
Sequence	EPLLDTHIVNGERDETATAPASPTTDSCDGNASDSSYRTPGIGPVLPLEERGAETETKVQERENG ESPLELEQLDQHHEMKETNEQ
Host	Rabbit
Reactivity	Human
Form	Liquid

Purification	Antigen affinity purification
Isotype	IgG
Recommend Usage	Immunohistochemistry (1:20-1:50) Immunofluorescence (1-4 ug/mL) The optimal working dilution should be determined by the end user.
Storage Buffer	In PBS, pH 7.2 (40% glycerol, 0.02% sodium azide)
Storage Instruction	Store at 4°C. For long term storage store at -20°C. Aliquot to avoid repeated freezing and thawing.
Note	This product contains sodium azide: a POISONOUS AND HAZARDOUS SUBSTANCE which should be handled by trained staff only.

## Applications

- Immunohistochemistry (Formalin/PFA-fixed paraffin-embedded sections)

Immunohistochemical staining of human testis with FGD4 polyclonal antibody (Cat # PAB23406) shows distinct cytoplasmic positivity in cells in seminiferous ducts.

- Immunofluorescence

Immunofluorescent staining of human cell line U-2 OS with FGD4 polyclonal antibody (Cat # PAB23406) at 1-4 ug/mL dilution shows positivity in cytoskeleton (actin filaments).

## Gene Info — FGD4

Entrez GeneID	<a href="#">121512</a>
Protein Accession#	<a href="#">Q96M96</a>
Gene Name	FGD4
Gene Alias	CMT4H, DKFZp313E1818, DKFZp434K1572, FLJ34370, FLJ42663, FRABP, MGC57222, ZFYVE6
Gene Description	FYVE, RhoGEF and PH domain containing 4
Omim ID	<a href="#">609311</a> <a href="#">611104</a>
Gene Ontology	<a href="#">Hyperlink</a>

**Gene Summary**

This gene encodes a protein that is involved in the regulation of the actin cytoskeleton and cell shape. This protein contains an actin filament-binding domain, which together with its Dbl homology domain and one of its pleckstrin homology domains, can form microspikes. This protein can activate MAPK8 independently of the actin filament-binding domain, and it is also involved in the activation of CDC42 via the exchange of bound GDP for free GTP. The activation of CDC42 also enables this protein to play a role in mediating the cellular invasion of *Cryptosporidium parvum*, an intracellular parasite that infects the gastrointestinal tract. Mutations in this gene can cause Charcot-Marie-Tooth disease type 4H (CMT4H), a disorder of the peripheral nervous system. [provided by RefSeq]

**Other Designations**

FGD1 family, member 4|FGD1-related F-actin-binding protein|actin-filament binding protein frabin|zinc finger FYVE domain-containing protein 6

**Disease**

- [Tobacco Use Disorder](#)