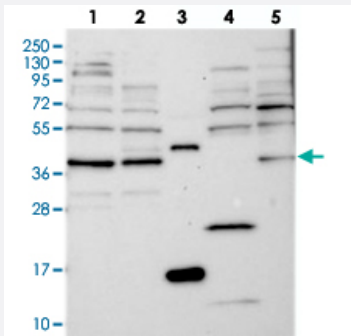


FAXC polyclonal antibody

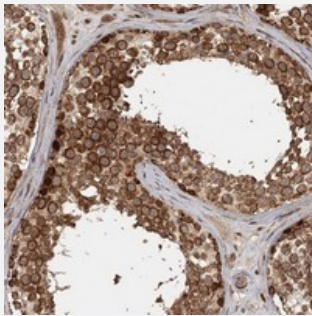
Catalog # PAB23398 Size 100 uL

Applications



Western Blot

Western blot analysis of Lane 1: RT-4, Lane 2: U-251 MG, Lane 3: Human Plasma, Lane 4: Liver, Lane 5: Tonsil with FAXC polyclonal antibody (Cat # PAB23398) at 1:250-1:500 dilution.



Immunohistochemistry (Formalin/PFA-fixed paraffin-embedded sections)

Immunohistochemical staining of human testis with FAXC polyclonal antibody (Cat # PAB23398) shows strong cytoplasmic positivity in cells in seminiferous ducts at 1:200-1:500 dilution.

Specification

Product Description	Rabbit polyclonal antibody raised against recombinant FAXC.
Immunogen	Recombinant protein corresponding to amino acids of human FAXC.
Sequence	HFYWTLAYCQWVDNLNETRKMLSLSGGGPFSNLLRWVCHITKGIVKREMHGHGIGRFSEEEYMLMEKDMRSLAGLLG
Host	Rabbit
Reactivity	Human
Form	Liquid

Purification	Antigen affinity purification
Isotype	IgG
Recommend Usage	Immunohistochemistry (1:200-1:500) Western Blot (1:250-1:500) The optimal working dilution should be determined by the end user.
Storage Buffer	In PBS, pH 7.2 (40% glycerol, 0.02% sodium azide)
Storage Instruction	Store at 4°C. For long term storage store at -20°C. Aliquot to avoid repeated freezing and thawing.
Note	This product contains sodium azide: a POISONOUS AND HAZARDOUS SUBSTANCE which should be handled by trained staff only.

Applications

- Western Blot

Western blot analysis of Lane 1: RT-4, Lane 2: U-251 MG, Lane 3: Human Plasma, Lane 4: Liver, Lane 5: Tonsil with FAXC polyclonal antibody (Cat # PAB23398) at 1:250-1:500 dilution.

- Immunohistochemistry (Formalin/PFA-fixed paraffin-embedded sections)

Immunohistochemical staining of human testis with FAXC polyclonal antibody (Cat # PAB23398) shows strong cytoplasmic positivity in cells in seminiferous ducts at 1:200-1:500 dilution.

Gene Info — FAXC

Entrez GeneID	84553
Protein Accession#	Q5TGI0
Gene Name	FAXC
Gene Alias	C6orf168, dJ273F20
Gene Description	failed axon connections homolog (Drosophila)
Gene Ontology	Hyperlink
Other Designations	failed axon connections homolog