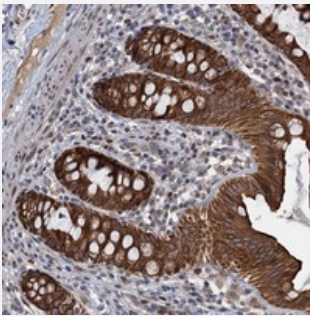


C12orf52 polyclonal antibody

Catalog # PAB23395 Size 100 uL

Applications



Immunohistochemistry (Formalin/PFA-fixed paraffin-embedded sections)

Immunohistochemical staining of human rectum with C12orf52 polyclonal antibody (Cat # PAB23395) shows strong cytoplasmic and membranous positivity in glandular cells at 1:50-1:200 dilution.

Specification

Product Description	Rabbit polyclonal antibody raised against recombinant C12orf52.
Immunogen	Recombinant protein corresponding to amino acids of human C12orf52.
Sequence	AGPSKTEPGPAADSQKLSMGGHSSRPLKRGLSHSLTHLNVPSTGHPATSAPHTNGPQDLRPST SGVTFRSPLVTSRARSVSISVPST
Host	Rabbit
Reactivity	Human
Form	Liquid
Purification	Antigen affinity purification
Isotype	IgG
Recommend Usage	Immunohistochemistry (1:50-1:200) The optimal working dilution should be determined by the end user.
Storage Buffer	In PBS, pH 7.2 (40% glycerol, 0.02% sodium azide)

Storage Instruction

Store at 4°C. For long term storage store at -20°C.
Aliquot to avoid repeated freezing and thawing.

Note

This product contains sodium azide: a POISONOUS AND HAZARDOUS SUBSTANCE which should be handled by trained staff only.

Applications

- Immunohistochemistry (Formalin/PFA-fixed paraffin-embedded sections)

Immunohistochemical staining of human rectum with C12orf52 polyclonal antibody (Cat # PAB23395) shows strong cytoplasmic and membranous positivity in glandular cells at 1:50-1:200 dilution.

Gene Info — C12orf52

Entrez GeneID[84934](#)**Protein Accession#**[Q96K30](#)**Gene Name**

C12orf52

Gene Alias

FLJ14827

Gene Description

chromosome 12 open reading frame 52

Gene Ontology[Hyperlink](#)**Other Designations**

hypothetical protein LOC84934