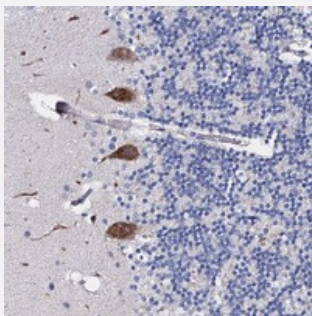


PPP1R32 polyclonal antibody

Catalog # PAB23392 Size 100 uL

Applications



Immunohistochemistry (Formalin/PFA-fixed paraffin-embedded sections)

Immunohistochemical staining of human cerebellum with PPP1R32 polyclonal antibody (Cat # PAB23392) shows strong cytoplasmic positivity in purkinje cells.

Specification

Product Description	Rabbit polyclonal antibody raised against recombinant PPP1R32.
Immunogen	Recombinant protein corresponding to amino acids of human PPP1R32.
Sequence	TSSGYGREKPSAGPPTKEVRKVHFDTQEHGPQAITGLEPREVPLLHQQQGQDPLERENFRHGPR FMTSEYNSKYLRDPLDQPDFLQKKSIGAKEGSGFTKQSHQ
Host	Rabbit
Reactivity	Human
Form	Liquid
Purification	Antigen affinity purification
Isotype	IgG
Recommend Usage	Immunohistochemistry (1:200-1:500) The optimal working dilution should be determined by the end user.
Storage Buffer	In PBS, pH 7.2 (40% glycerol, 0.02% sodium azide)

Storage Instruction

Store at 4°C. For long term storage store at -20°C.
Aliquot to avoid repeated freezing and thawing.

Note

This product contains sodium azide: a POISONOUS AND HAZARDOUS SUBSTANCE which should be handled by trained staff only.

Applications

- Immunohistochemistry (Formalin/PFA-fixed paraffin-embedded sections)

Immunohistochemical staining of human cerebellum with PPP1R32 polyclonal antibody (Cat # PAB23392) shows strong cytoplasmic positivity in purkinje cells.

Gene Info — PPP1R32

Entrez GeneID[220004](#)**Protein Accession#**[Q7Z5V6](#)**Gene Name**

PPP1R32

Gene Alias

C11orf66, ILLG9

Gene Description

protein phosphatase 1, regulatory subunit 32

Gene Ontology[Hyperlink](#)**Gene Summary**

protein phosphatase 1 regulatory subunit 32

Other Designations

protein phosphatase 1 regulatory subunit 32