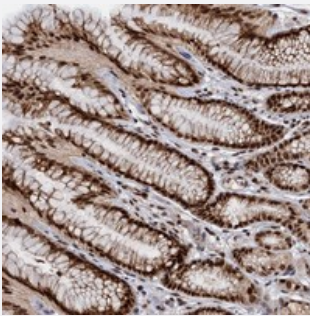


WBP4 polyclonal antibody

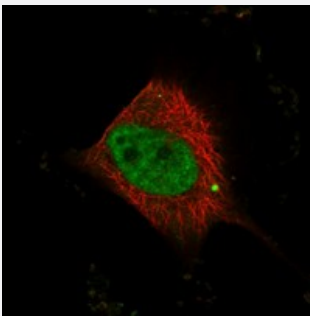
Catalog # PAB23372 Size 100 uL

Applications



Immunohistochemistry (Formalin/PFA-fixed paraffin-embedded sections)

Immunohistochemical staining of human stomach with WBP4 polyclonal antibody (Cat # PAB23372) shows strong nuclear positivity in glandular cells at 1:200-1:500 dilution.



Immunofluorescence

Immunofluorescent staining of human cell line U-251 MG with WBP4 polyclonal antibody (Cat # PAB23372) at 1-4 ug/mL dilution shows positivity in nucleus but not nucleoli.

Specification

Product Description	Rabbit polyclonal antibody raised against recombinant WBP4.
Immunogen	Recombinant protein corresponding to amino acids of human WBP4.
Sequence	YCKCWIADNRPSVEFHERGKNHKENVAKRISEIKQKSLDKAKEEEEKASKEFAAMEAAALKAYQE DLKRLGLESEILEPSITPVTSTIPTSTSNQQKEK
Host	Rabbit
Reactivity	Human
Form	Liquid

Purification	Antigen affinity purification
Isotype	IgG
Recommend Usage	Immunohistochemistry (1:200-1:500) Immunofluorescence (1-4 ug/mL) The optimal working dilution should be determined by the end user.
Storage Buffer	In PBS, pH 7.2 (40% glycerol, 0.02% sodium azide)
Storage Instruction	Store at 4°C. For long term storage store at -20°C. Aliquot to avoid repeated freezing and thawing.
Note	This product contains sodium azide: a POISONOUS AND HAZARDOUS SUBSTANCE which should be handled by trained staff only.

Applications

- Immunohistochemistry (Formalin/PFA-fixed paraffin-embedded sections)

Immunohistochemical staining of human stomach with WBP4 polyclonal antibody (Cat # PAB23372) shows strong nuclear positivity in glandular cells at 1:200-1:500 dilution.

- Immunofluorescence

Immunofluorescent staining of human cell line U-251 MG with WBP4 polyclonal antibody (Cat # PAB23372) at 1-4 ug/mL dilution shows positivity in nucleus but not nucleoli.

Gene Info — WBP4

Entrez GeneID	11193
Protein Accession#	O75554
Gene Name	WBP4
Gene Alias	FBP21, MGC117310
Gene Description	WW domain binding protein 4 (formin binding protein 21)
Omim ID	604981
Gene Ontology	Hyperlink
Gene Summary	This gene encodes WW domain-containing binding protein 4. The WW domain represents a small and compact globular structure that interacts with proline-rich ligands. This encoded protein is a general spliceosomal protein that may play a role in cross-intron bridging of U1 and U2 snRNPs in the spliceosomal complex A. [provided by RefSeq]

Other Designations

OTTHUMP00000018311|WW domain-containing binding protein 4|domain-containing binding protein 4|formin binding protein 21
