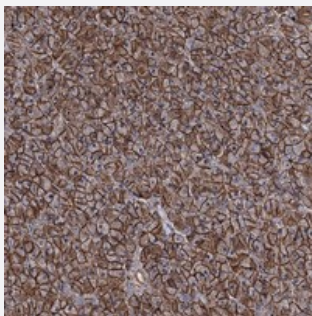


# FAM48A polyclonal antibody

Catalog # PAB23360      Size 100 uL

## Applications



### Immunohistochemistry (Formalin/PFA-fixed paraffin-embedded sections)

Immunohistochemical staining of human pancreas with FAM48A polyclonal antibody (Cat # PAB23360) shows strong nucleolar positivity combined with distinct membranous and cytoplasmic staining in exocrine cells at 1:200-1:500 dilution.

## Specification

Product Description	Rabbit polyclonal antibody raised against recombinant FAM48A.
Immunogen	Recombinant protein corresponding to amino acids of human FAM48A.
Sequence	DSETIRLPYEEGELLEYLDAEELPPILVDLLEKSQVNIFHCGCVIAEIRDYRQSSNMKSPGYQSRHIL LRPTMQTLICDVHSITSDNHKWTQED
Host	Rabbit
Reactivity	Human
Form	Liquid
Purification	Antigen affinity purification
Isotype	IgG
Recommend Usage	Immunohistochemistry (1:200-1:500) The optimal working dilution should be determined by the end user.
Storage Buffer	In PBS, pH 7.2 (40% glycerol, 0.02% sodium azide)

**Storage Instruction**

Store at 4°C. For long term storage store at -20°C.  
Aliquot to avoid repeated freezing and thawing.

**Note**

This product contains sodium azide: a POISONOUS AND HAZARDOUS SUBSTANCE which should be handled by trained staff only.

## Applications

- Immunohistochemistry (Formalin/PFA-fixed paraffin-embedded sections)

Immunohistochemical staining of human pancreas with FAM48A polyclonal antibody (Cat # PAB23360) shows strong nucleolar positivity combined with distinct membranous and cytoplasmic staining in exocrine cells at 1:200-1:500 dilution.

## Gene Info — FAM48A

**Entrez GeneID** [55578](#)

**Protein Accession#** [Q8NEM7](#)

**Gene Name** FAM48A

**Gene Alias** C13, C13orf19, FP757, P38IP, bA421P11.4

**Gene Description** family with sequence similarity 48, member A

**Gene Ontology** [Hyperlink](#)

**Gene Summary** O

**Other Designations** OTTHUMP00000018265|OTTHUMP00000042271|p38 interacting protein|transcription factor (p38 interacting protein)|tumor rejection antigen