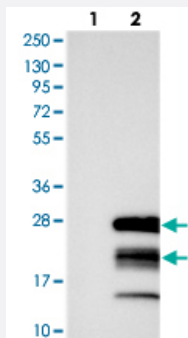


GTSF1 polyclonal antibody

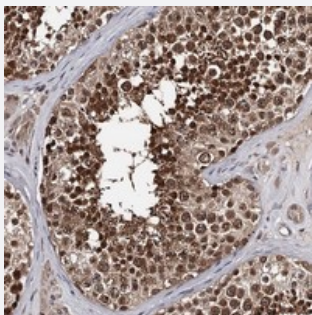
Catalog # PAB23356 Size 100 uL

Applications



Western Blot (Transfected lysate)

Western blot analysis of Lane 1: Negative control (vector only transfected HEK293T lysate), Lane 2: Over-expression Lysate (Co-expressed with a C-terminal myc-DDK tag (~3.1 kDa) in mammalian HEK293T cells) with GTSF1 polyclonal antibody (Cat # PAB23356).



Immunohistochemistry (Formalin/PFA-fixed paraffin-embedded sections)

Immunohistochemical staining of human testis with GTSF1 polyclonal antibody (Cat # PAB23356) shows strong nuclear positivity in seminiferous ducts.

Specification

| | |
|----------------------------|--|
| Product Description | Rabbit polyclonal antibody raised against recombinant GTSF1. |
| Immunogen | Recombinant protein corresponding to amino acids of human GTSF1. |
| Sequence | DPEKLLQCPYDKNHQIRACRFPYHLIKCRKNHPDVASKLATCPFNARHQVPRAEISHHISCDDRS CIEQDVVNQ |
| Host | Rabbit |
| Reactivity | Human |
| Form | Liquid |

| | |
|----------------------------|---|
| Purification | Antigen affinity purification |
| Isotype | IgG |
| Recommend Usage | Immunohistochemistry (1:50-1:200) Western Blot (1:250-1:500) The optimal working dilution should be determined by the end user. |
| Storage Buffer | In PBS, pH 7.2 (40% glycerol, 0.02% sodium azide) |
| Storage Instruction | Store at 4°C. For long term storage store at -20°C. Aliquot to avoid repeated freezing and thawing. |
| Note | This product contains sodium azide: a POISONOUS AND HAZARDOUS SUBSTANCE which should be handled by trained staff only. |

Applications

- Western Blot (Transfected lysate)

Western blot analysis of Lane 1: Negative control (vector only transfected HEK293T lysate), Lane 2: Over-expression Lysate (Co-expressed with a C-terminal myc-DDK tag (~3.1 kDa) in mammalian HEK293T cells) with GTSF1 polyclonal antibody (Cat # PAB23356).

- Immunohistochemistry (Formalin/PFA-fixed paraffin-embedded sections)

Immunohistochemical staining of human testis with GTSF1 polyclonal antibody (Cat # PAB23356) shows strong nuclear positivity in seminiferous ducts.

Gene Info — GTSF1

| | |
|---------------------------|---|
| Entrez GeneID | 121355 |
| Protein Accession# | Q8WW33 |
| Gene Name | GTSF1 |
| Gene Alias | FAM112B, FLJ32942 |
| Gene Description | gametocyte specific factor 1 |
| Gene Ontology | Hyperlink |
| Gene Summary | member B |
| Other Designations | family with sequence similarity 112, member B |