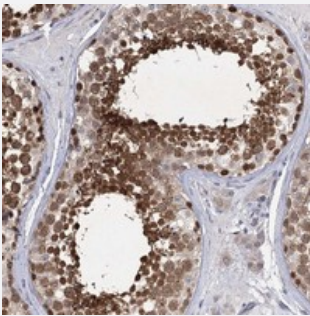


# PHYHIPL polyclonal antibody

Catalog # PAB23341      Size 100 uL

## Applications



### Immunohistochemistry (Formalin/PFA-fixed paraffin-embedded sections)

Immunohistochemical staining of human testis with PHYHIPL polyclonal antibody (Cat # PAB23341) shows strong nuclear and cytoplasmic positivity in seminiferous tubules at 1:50-1:200 dilution.

## Specification

<b>Product Description</b>	Rabbit polyclonal antibody raised against recombinant PHYHIPL.
<b>Immunogen</b>	Recombinant protein corresponding to amino acids of human PHYHIPL.
<b>Sequence</b>	MEVPRLDHALNSPTSPCEEVIKNLSLEAIQLCDRDGNKSQDSGIAEMEELPVPHNI
<b>Host</b>	Rabbit
<b>Reactivity</b>	Human
<b>Form</b>	Liquid
<b>Purification</b>	Antigen affinity purification
<b>Isotype</b>	IgG
<b>Recommend Usage</b>	Immunohistochemistry (1:50-1:200) The optimal working dilution should be determined by the end user.
<b>Storage Buffer</b>	In PBS, pH 7.2 (40% glycerol, 0.02% sodium azide)
<b>Storage Instruction</b>	Store at 4°C. For long term storage store at -20°C. Aliquot to avoid repeated freezing and thawing.

**Note**

This product contains sodium azide: a POISONOUS AND HAZARDOUS SUBSTANCE which should be handled by trained staff only.

## Applications

- Immunohistochemistry (Formalin/PFA-fixed paraffin-embedded sections)

Immunohistochemical staining of human testis with PHYHIPL polyclonal antibody (Cat # PAB23341) shows strong nuclear and cytoplasmic positivity in seminiferous tubules at 1:50-1:200 dilution.

## Gene Info — PHYHIPL

**Entrez GeneID** [84457](#)

**Protein Accession#** [Q96FC7](#)

**Gene Name** PHYHIPL

**Gene Alias** KIAA1796

**Gene Description** phytanoyl-CoA 2-hydroxylase interacting protein-like

**Gene Ontology** [Hyperlink](#)

**Other Designations** OTTHUMP00000019638|phytanoyl-CoA hydroxylase interacting protein-like

## Disease

- [Alzheimer Disease](#)
- [Genetic Predisposition to Disease](#)
- [Tobacco Use Disorder](#)