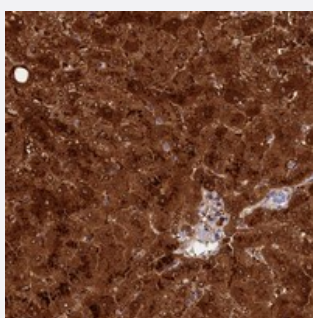


TTC36 polyclonal antibody

Catalog # PAB23339 Size 100 uL

Applications



Immunohistochemistry (Formalin/PFA-fixed paraffin-embedded sections)

Immunohistochemical staining of human liver with TTC36 polyclonal antibody (Cat # PAB23339) shows strong cytoplasmic and nuclear positivity in hepatocytes.

Specification

Product Description	Rabbit polyclonal antibody raised against recombinant TTC36.
Immunogen	Recombinant protein corresponding to amino acids of human TTC36.
Sequence	GTPNDQAVLQAIIFNPDPFGDIVGLDLGEEAEKEEREDEVFPQAQLEQSKALELQGVMAAEA
Host	Rabbit
Reactivity	Human
Form	Liquid
Purification	Antigen affinity purification
Isotype	IgG
Recommend Usage	Immunohistochemistry (1:500-1:1000) Western Blot (0.4 ug/mL) The optimal working dilution should be determined by the end user.
Storage Buffer	In PBS, pH 7.2 (40% glycerol, 0.02% sodium azide)

Storage Instruction

Store at 4°C. For long term storage store at -20°C.
Aliquot to avoid repeated freezing and thawing.

Note

This product contains sodium azide: a POISONOUS AND HAZARDOUS SUBSTANCE which should be handled by trained staff only.

Applications

- Immunohistochemistry (Formalin/PFA-fixed paraffin-embedded sections)

Immunohistochemical staining of human liver with TTC36 polyclonal antibody (Cat # PAB23339) shows strong cytoplasmic and nuclear positivity in hepatocytes.

Gene Info — TTC36

Entrez GeneID[143941](#)**Protein Accession#**[A6NLP5](#)**Gene Name**

TTC36

Gene Alias

HBP21

Gene Description

tetratricopeptide repeat domain 36

Gene Ontology[Hyperlink](#)**Other Designations**

HSP70 binding protein 21