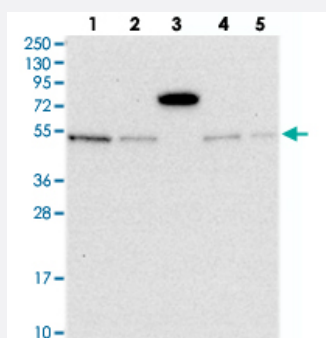


MSANTD2 polyclonal antibody

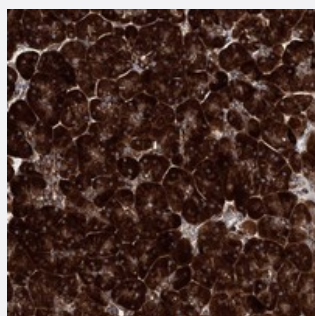
Catalog # PAB23330 Size 100 uL

Applications



Western Blot

Western blot analysis of Lane 1: RT-4, Lane 2: U-251 MG, Lane 3: Human Plasma, Lane 4: Liver, Lane 5: Tonsil with MSANTD2 polyclonal antibody (Cat # PAB23330) at 1:250-1:500 dilution.



Immunohistochemistry (Formalin/PFA-fixed paraffin-embedded sections)

Immunohistochemical staining of human pancreas with MSANTD2 polyclonal antibody (Cat # PAB23330) shows strong cytoplasmic positivity in exocrine glandular cells at 1:50-1:200 dilution.

Specification

Product Description	Rabbit polyclonal antibody raised against recombinant MSANTD2.
Immunogen	Recombinant protein corresponding to amino acids of human MSANTD2.
Sequence	ETNALIAVWGNRLVEARYQQLEGAGTVFGSKAPGPAMYERVSRALAE LGYERTPSQCRERIKTL RRCYSRVKEHGVGKRKSSYTFEQLEQVFGQ
Host	Rabbit
Reactivity	Human
Form	Liquid

Purification	Antigen affinity purification
Isotype	IgG
Recommend Usage	Immunohistochemistry (1:50-1:200) Western Blot (1:250-1:500) The optimal working dilution should be determined by the end user.
Storage Buffer	In PBS, pH 7.2 (40% glycerol, 0.02% sodium azide)
Storage Instruction	Store at 4°C. For long term storage store at -20°C. Aliquot to avoid repeated freezing and thawing.
Note	This product contains sodium azide: a POISONOUS AND HAZARDOUS SUBSTANCE which should be handled by trained staff only.

Applications

- Western Blot

Western blot analysis of Lane 1: RT-4, Lane 2: U-251 MG, Lane 3: Human Plasma, Lane 4: Liver, Lane 5: Tonsil with MSANTD2 polyclonal antibody (Cat # PAB23330) at 1:250-1:500 dilution.

- Immunohistochemistry (Formalin/PFA-fixed paraffin-embedded sections)

Immunohistochemical staining of human pancreas with MSANTD2 polyclonal antibody (Cat # PAB23330) shows strong cytoplasmic positivity in exocrine glandular cells at 1:50-1:200 dilution.

Gene Info — MSANTD2

Entrez GeneID	79684
Protein Accession#	Q6P1R3
Gene Name	MSANTD2
Gene Alias	C11orf61
Gene Description	Myb/SANT-like DNA-binding domain containing 2
Gene Ontology	Hyperlink
Other Designations	myb/SANT-like DNA-binding domain-containing protein 2

Disease

- [Celiac Disease](#)
- [Genetic Predisposition to Disease](#)