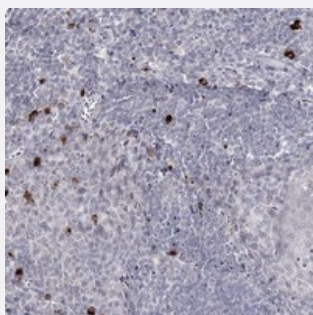


LY6G5C polyclonal antibody

Catalog # PAB23329 Size 100 uL

Applications



Immunohistochemistry (Formalin/PFA-fixed paraffin-embedded sections)

Immunohistochemical staining of human tonsil with LY6G5C polyclonal antibody (Cat # PAB23329) shows strong cytoplasmic positivity in a subset of cells.

Specification

Product Description	Rabbit polyclonal antibody raised against recombinant LY6G5C.
Immunogen	Recombinant protein corresponding to amino acids of human LY6G5C.
Sequence	ADLPSCWGAGPCYTGHKVGALRRDTVICCCRHGDYSTPCLFTPGKPSRNPSPWKRTLWT
Host	Rabbit
Reactivity	Human
Form	Liquid
Purification	Antigen affinity purification
Isotype	IgG
Recommend Usage	Immunohistochemistry (1:50-1:200) The optimal working dilution should be determined by the end user.
Storage Buffer	In PBS, pH 7.2 (40% glycerol, 0.02% sodium azide)
Storage Instruction	Store at 4°C. For long term storage store at -20°C. Aliquot to avoid repeated freezing and thawing.

Note

This product contains sodium azide: a POISONOUS AND HAZARDOUS SUBSTANCE which should be handled by trained staff only.

Applications

- Immunohistochemistry (Formalin/PFA-fixed paraffin-embedded sections)

Immunohistochemical staining of human tonsil with LY6G5C polyclonal antibody (Cat # PAB23329) shows strong cytoplasmic positivity in a subset of cells.

Gene Info — LY6G5C

Entrez GeneID [80741](#)

Protein Accession# [Q5SRR4](#)

Gene Name LY6G5C

Gene Alias C6orf20, G5c, LY6G5CA, LY6G5CB, NG33

Gene Description lymphocyte antigen 6 complex, locus G5C

Omim ID [610434](#)

Gene Ontology [Hyperlink](#)

Gene Summary LY6G5C belongs to a cluster of leukocyte antigen-6 (LY6) genes located in the major histocompatibility complex (MHC) class III region on chromosome 6. Members of the LY6 superfamily typically contain 70 to 80 amino acids, including 8 to 10 cysteines. Most LY6 proteins are attached to the cell surface by a glycosylphosphatidylinositol (GPI) anchor that is directly involved in signal transduction (Mallya et al., 2002 [PubMed 12079290]).[supplied by OMIM]

Other Designations lymphocyte antigen 6 complex G5C|lymphocyte antigen-6 G5C

Disease

- [Arthritis](#)
- [Genetic Predisposition to Disease](#)
- [Lupus Erythematosus](#)
- [Osteoarthritis](#)