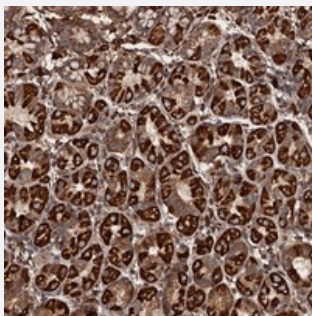


IKIP polyclonal antibody

Catalog # PAB23328 Size 100 uL

Applications



Immunohistochemistry (Formalin/PFA-fixed paraffin-embedded sections)

Immunohistochemical staining of human stomach with IKIP polyclonal antibody (Cat # PAB23328) shows strong cytoplasmic positivity in glandular cells at 1:500-1:1000 dilution.

Specification

Product Description	Rabbit polyclonal antibody raised against recombinant IKIP.
Immunogen	Recombinant protein corresponding to amino acids of human IKIP.
Sequence	LESTESILQEATSSMSLMTQFEQEVSNLQDIMHDIQNNEEVLTQRMQSLNEKFQNTDFWKRSL EE MNINTDIFKSEAKHIHSQVTVQIN
Host	Rabbit
Reactivity	Human
Form	Liquid
Purification	Antigen affinity purification
Isotype	IgG
Recommend Usage	Immunohistochemistry (1:500-1:1000) The optimal working dilution should be determined by the end user.
Storage Buffer	In PBS, pH 7.2 (40% glycerol, 0.02% sodium azide)

Storage Instruction

Store at 4°C. For long term storage store at -20°C.
Aliquot to avoid repeated freezing and thawing.

Note

This product contains sodium azide: a POISONOUS AND HAZARDOUS SUBSTANCE which should be handled by trained staff only.

Applications

- Immunohistochemistry (Formalin/PFA-fixed paraffin-embedded sections)

Immunohistochemical staining of human stomach with IKIP polyclonal antibody (Cat # PAB23328) shows strong cytoplasmic positivity in glandular cells at 1:500-1:1000 dilution.

Gene Info — IKIP

Entrez GeneID[121457](#)**Protein Accession#**[Q70UQ0](#)**Gene Name**

IKIP

Gene Alias

FLJ31051

Gene Description

IKK interacting protein

Omim ID[609861](#)**Gene Ontology**[Hyperlink](#)**Other Designations**

I kappa B kinase interacting protein