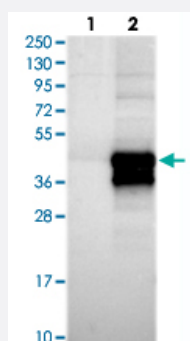


HARBI1 polyclonal antibody

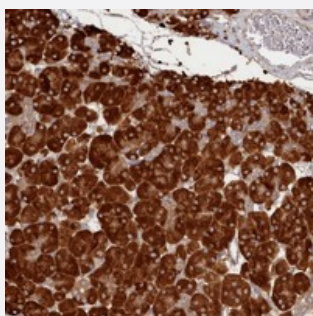
Catalog # PAB23326 Size 100 uL

Applications



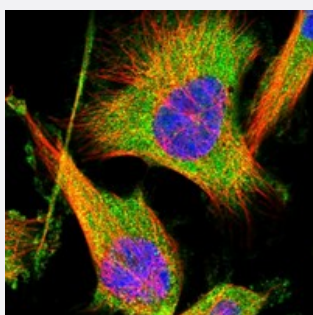
Western Blot (Transfected lysate)

Western blot analysis of Lane 1: Negative control (vector only transfected HEK293T lysate), Lane 2: Over-expression Lysate (Co-expressed with a C-terminal myc-DDK tag (~3.1 kDa) in mammalian HEK293T cells) with HARBI1 polyclonal antibody (Cat # PAB23326) at 1:250-1:500 dilution.



Immunohistochemistry (Formalin/PFA-fixed paraffin-embedded sections)

Immunohistochemical staining of human pancreas with HARBI1 polyclonal antibody (Cat # PAB23326) shows strong cytoplasmic positivity in exocrine glandular cells at 1:500-1:1000 dilution.



Immunofluorescence

Immunofluorescent staining of human cell line U-251 MG with HARBI1 polyclonal antibody (Cat # PAB23326) at 1-4 ug/mL dilution shows positivity in cytoplasm.

Specification

Product Description

Rabbit polyclonal antibody raised against recombinant HARBI1.

Immunogen

Recombinant protein corresponding to amino acids of human HARBI1.

Sequence	VIEKTFRTLCSRFRCCLDGSKGALQYSPEKSSHILACCVLHNISLEHGMDVWSSPMTGPMEQPPE EEYEHMESLDLEADRIRQELM
Host	Rabbit
Reactivity	Human
Form	Liquid
Purification	Antigen affinity purification
Isotype	IgG
Recommend Usage	Immunohistochemistry (1:500-1:1000) Western Blot (1:250-1:500) Immunofluorescence (1-4 ug/mL) The optimal working dilution should be determined by the end user.
Storage Buffer	In PBS, pH 7.2 (40% glycerol, 0.02% sodium azide)
Storage Instruction	Store at 4°C. For long term storage store at -20°C. Aliquot to avoid repeated freezing and thawing.
Note	This product contains sodium azide: a POISONOUS AND HAZARDOUS SUBSTANCE which should be handled by trained staff only.

Applications

- Western Blot (Transfected lysate)

Western blot analysis of Lane 1: Negative control (vector only transfected HEK293T lysate), Lane 2: Over-expression Lysate (Co-expressed with a C-terminal myc-DDK tag (~3.1 kDa) in mammalian HEK293T cells) with HARBI1 polyclonal antibody (Cat # PAB23326) at 1:250-1:500 dilution.

- Immunohistochemistry (Formalin/PFA-fixed paraffin-embedded sections)

Immunohistochemical staining of human pancreas with HARBI1 polyclonal antibody (Cat # PAB23326) shows strong cytoplasmic positivity in exocrine glandular cells at 1:500-1:1000 dilution.

- Immunofluorescence

Immunofluorescent staining of human cell line U-251 MG with HARBI1 polyclonal antibody (Cat # PAB23326) at 1-4 ug/mL dilution shows positivity in cytoplasm.

Gene Info — HARBI1

Entrez GeneID [283254](#)

Protein Accession#	Q96MB7
Gene Name	HARBI1
Gene Alias	C11orf77, FLJ32675
Gene Description	harbinger transposase derived 1
Gene Ontology	Hyperlink
Other Designations	-