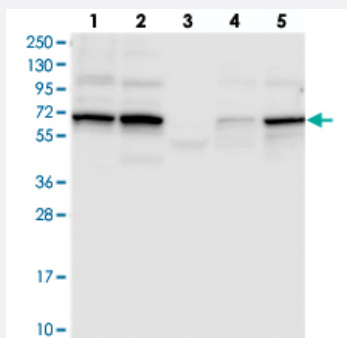


TCHP polyclonal antibody

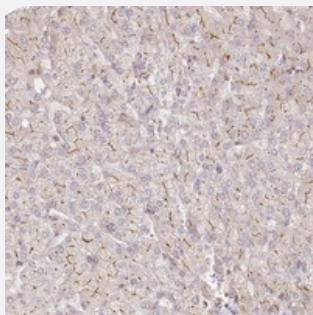
Catalog # PAB23320 Size 100 uL

Applications



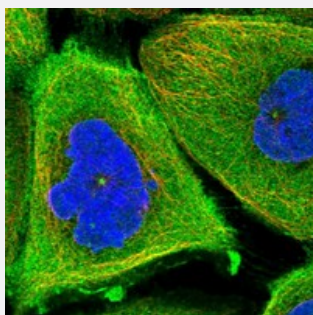
Western Blot

Western blot analysis of Lane 1: RT-4, Lane 2: U-251 MG, Lane 3: Human Plasma, Lane 4: Liver, Lane 5: Tonsil with TCHP polyclonal antibody (Cat # PAB23320) at 1:250-1:500 dilution.



Immunohistochemistry (Formalin/PFA-fixed paraffin-embedded sections)

Immunohistochemical staining of human liver with TCHP polyclonal antibody (Cat # PAB23320) shows distinct membranous positivity in hepatocytes at 1:1000-1:2500 dilution.



Immunofluorescence

Immunofluorescent staining of human cell line A-431 with TCHP polyclonal antibody (Cat # PAB23320) at 1-4 ug/mL dilution shows positivity in plasma membrane, cytoplasm and centrosome.

Specification

Product Description

Rabbit polyclonal antibody raised against recombinant TCHP.

Immunogen

Recombinant protein corresponding to amino acids of human TCHP.

Sequence	MEAFRQKAELGRFLRHQYNAQLSRRTQQIQEELEADRRILQALLEKEDESQRLHLARREQVMADV AWMKQAIEEQ
Host	Rabbit
Reactivity	Human
Form	Liquid
Purification	Antigen affinity purification
Isotype	IgG
Recommend Usage	Immunohistochemistry (1:1000-1:2500) Western Blot (1:250-1:500) Immunofluorescence (1-4 ug/mL) The optimal working dilution should be determined by the end user.
Storage Buffer	In PBS, pH 7.2 (40% glycerol, 0.02% sodium azide)
Storage Instruction	Store at 4°C. For long term storage store at -20°C. Aliquot to avoid repeated freezing and thawing.
Note	This product contains sodium azide: a POISONOUS AND HAZARDOUS SUBSTANCE which should be handled by trained staff only.

Applications

- Western Blot

Western blot analysis of Lane 1: RT-4, Lane 2: U-251 MG, Lane 3: Human Plasma, Lane 4: Liver, Lane 5: Tonsil with TCHP polyclonal antibody (Cat # PAB23320) at 1:250-1:500 dilution.

- Immunohistochemistry (Formalin/PFA-fixed paraffin-embedded sections)

Immunohistochemical staining of human liver with TCHP polyclonal antibody (Cat # PAB23320) shows distinct membranous positivity in hepatocytes at 1:1000-1:2500 dilution.

- Immunofluorescence

Immunofluorescent staining of human cell line A-431 with TCHP polyclonal antibody (Cat # PAB23320) at 1-4 ug/mL dilution shows positivity in plasma membrane, cytoplasm and centrosome.

Gene Info — TCHP

Entrez GeneID [84260](#)

Protein Accession# [Q9BT92](#)

Gene Name	TCHP
Gene Alias	MGC10854
Gene Description	trichoplein, keratin filament binding
Gene Ontology	Hyperlink
Gene Summary	O
Other Designations	trichoplein

Publication Reference

- [Microtubule asters anchored by FSD1 control axoneme assembly and ciliogenesis.](#)

Tu HQ, Qin XH, Liu ZB, Song ZQ, Hu HB, Zhang YC, Chang Y, Wu M, Huang Y, Bai YF, Wang G, Han QY, Li AL, Zhou T, Liu F, Zhang XM, Li HY.

Nature Communications 2018 Dec; 9(1):5277.

Application: WB-Tr, Human, HEK 293T cells