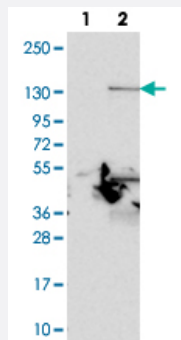


PLEKHA7 polyclonal antibody

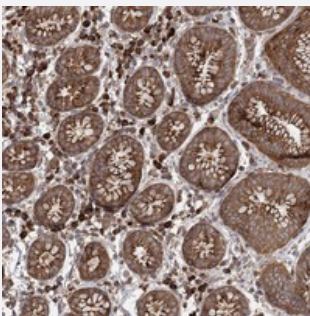
Catalog # PAB23315 Size 100 uL

Applications



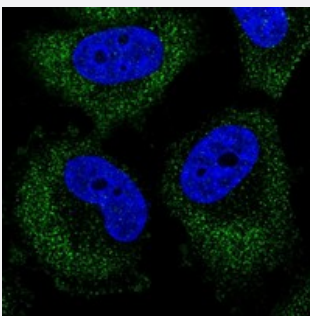
Western Blot (Transfected lysate)

Western blot analysis of Lane 1: Negative control (vector only transfected HEK293T lysate).
Lane 2: Over-expression lysate (Co-expressed with a C-terminal myc-DDK tag (~3.1 kDa) in mammalian HEK293T cells with PLEKHA7 polyclonal antibody (Cat # PAB23315).



Immunohistochemistry (Formalin/PFA-fixed paraffin-embedded sections)

Immunohistochemical staining of human stomach with PLEKHA7 polyclonal antibody (Cat # PAB23315) shows strong cytoplasmic and membranous positivity in glandular cells at 1:200-1:500 dilution.



Immunofluorescence

Immunofluorescent staining of human cell line U-251 MG with PLEKHA7 polyclonal antibody (Cat # PAB23315) at 1-4 ug/mL dilution shows positivity in cytoplasm.

Specification

Product Description

Rabbit polyclonal antibody raised against recombinant PLEKHA7.

Immunogen

Recombinant protein corresponding to amino acids of human PLEKHA7.

Sequence	SSLKRDMEKVERQAVPQANHTESCHECGRVGPGRHTRDCPHRGHDDIVNFERQEQEGEQYRSQ RDPLEGKRDRSKARSPYSPAEEDALFMDLPTGP
Host	Rabbit
Reactivity	Human
Form	Liquid
Purification	Antigen affinity purification
Isotype	IgG
Recommend Usage	Immunohistochemistry (1:200-1:500) Immunofluorescence (1-4 ug/mL) The optimal working dilution should be determined by the end user.
Storage Buffer	In PBS, pH 7.2 (40% glycerol, 0.02% sodium azide)
Storage Instruction	Store at 4°C. For long term storage store at -20°C. Aliquot to avoid repeated freezing and thawing.
Note	This product contains sodium azide: a POISONOUS AND HAZARDOUS SUBSTANCE which should be handled by trained staff only.

Applications

- Western Blot (Transfected lysate)

Western blot analysis of Lane 1: Negative control (vector only transfected HEK293T lysate).

Lane 2: Over-expression lysate (Co-expressed with a C-terminal myc-DDK tag (~3.1 kDa) in mammalian HEK293T cells with PLEKHA7 polyclonal antibody (Cat # PAB23315).

- Immunohistochemistry (Formalin/PFA-fixed paraffin-embedded sections)

Immunohistochemical staining of human stomach with PLEKHA7 polyclonal antibody (Cat # PAB23315) shows strong cytoplasmic and membranous positivity in glandular cells at 1:200-1:500 dilution.

- Immunofluorescence

Immunofluorescent staining of human cell line U-251 MG with PLEKHA7 polyclonal antibody (Cat # PAB23315) at 1-4 ug/mL dilution shows positivity in cytoplasm.

Gene Info — PLEKHA7

Entrez GeneID [144100](#)

Protein Accession# [Q6IQ23](#)

Gene Name	PLEKHA7
Gene Alias	DKFZp686M22243
Gene Description	pleckstrin homology domain containing, family A member 7
Gene Ontology	Hyperlink
Gene Summary	O
Other Designations	pleckstrin homology domain containing, family A member 2

Disease

- [Hypertension](#)
- [Tobacco Use Disorder](#)