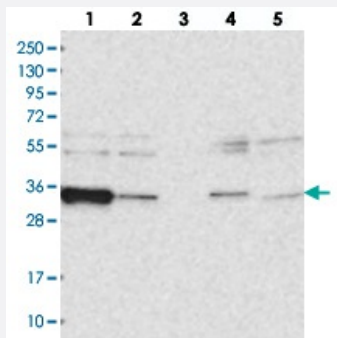


ACTR6 polyclonal antibody

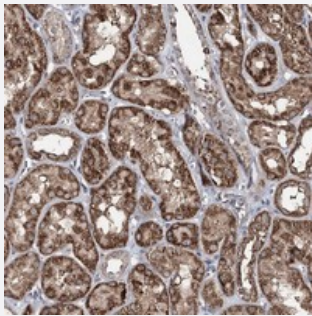
Catalog # PAB23309 Size 100 uL

Applications



Western Blot

Western blot analysis of Lane 1: RT-4, Lane 2: U-251 MG, Lane 3: Human Plasma, Lane 4: Liver, Lane 5: Tonsil with ACTR6 polyclonal antibody (Cat # PAB23309).



Immunohistochemistry (Formalin/PFA-fixed paraffin-embedded sections)

Immunohistochemical staining of human kidney with ACTR6 polyclonal antibody (Cat # PAB23309) shows strong cytoplasmic positivity in renal tubules.

Specification

Product Description	Rabbit polyclonal antibody raised against recombinant ACTR6.
Immunogen	Recombinant protein corresponding to amino acids of human ACTR6.
Sequence	FYRDMDIAKLKGEENTVMIDYVLPDFSTIKKGFCCKPREEMVLSGKYKSGEQILRLANERFAVPEILF NPSDIGIQEMGIPEAV
Host	Rabbit
Reactivity	Human
Form	Liquid

Purification	Antigen affinity purification
Isotype	IgG
Recommend Usage	Immunohistochemistry (1:50-1:200) Western Blot (1:250-1:500) The optimal working dilution should be determined by the end user.
Storage Buffer	In PBS, pH 7.2 (40% glycerol, 0.02% sodium azide)
Storage Instruction	Store at 4°C. For long term storage store at -20°C. Aliquot to avoid repeated freezing and thawing.
Note	This product contains sodium azide: a POISONOUS AND HAZARDOUS SUBSTANCE which should be handled by trained staff only.

Applications

- Western Blot

Western blot analysis of Lane 1: RT-4, Lane 2: U-251 MG, Lane 3: Human Plasma, Lane 4: Liver, Lane 5: Tonsil with ACTR6 polyclonal antibody (Cat # PAB23309).

- Immunohistochemistry (Formalin/PFA-fixed paraffin-embedded sections)

Immunohistochemical staining of human kidney with ACTR6 polyclonal antibody (Cat # PAB23309) shows strong cytoplasmic positivity in renal tubules.

Gene Info — ACTR6

Entrez GeneID	64431
Protein Accession#	Q9GZN1
Gene Name	ACTR6
Gene Alias	ARP6, CDA12, FLJ13433, HSPC281, MSTP136, hARP6, hARPX
Gene Description	ARP6 actin-related protein 6 homolog (yeast)
Gene Ontology	Hyperlink
Other Designations	ARP6 actin-related protein 6 homolog actin-related protein 6