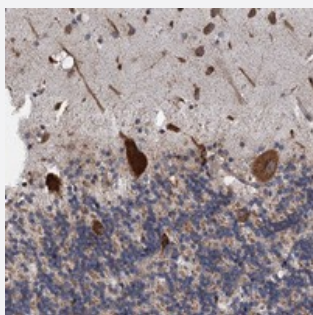


# LINS1 polyclonal antibody

Catalog # PAB23308      Size 100 uL

## Applications



### Immunohistochemistry (Formalin/PFA-fixed paraffin-embedded sections)

Immunohistochemical staining of human cerebellum with LINS1 polyclonal antibody (Cat # PAB23308) shows strong cytoplasmic positivity in Purkinje cells at 1:50-1:200 dilution.

## Specification

|                     |   |
|---------------------|---|
| Product Description | Rabbit polyclonal antibody raised against recombinant LINS1.  |
| Immunogen           | Recombinant protein corresponding to amino acids of human LINS1.  |
| Sequence            | SRVFIEQDDDMLEAAKASLGMLTLTRGCEATESLTQGKEMWDHHTHENGYNPHCIFLFFLKNIGF<br>DSTVLLDFLISSETCFLEYFVRYLKLLQKDWDN  |
| Host                | Rabbit  |
| Reactivity          | Human   |
| Form                | Liquid  |
| Purification        | Antigen affinity purification   |
| Isotype             | IgG   |
| Recommend Usage     | Immunohistochemistry (1:50-1:200)<br>The optimal working dilution should be determined by the end user. |
| Storage Buffer      | In PBS, pH 7.2 (40% glycerol, 0.02% sodium azide)   |

**Storage Instruction**

Store at 4°C. For long term storage store at -20°C.  
Aliquot to avoid repeated freezing and thawing.

**Note**

This product contains sodium azide: a POISONOUS AND HAZARDOUS SUBSTANCE which should be handled by trained staff only.

## Applications

- Immunohistochemistry (Formalin/PFA-fixed paraffin-embedded sections)

Immunohistochemical staining of human cerebellum with LINS1 polyclonal antibody (Cat # PAB23308) shows strong cytoplasmic positivity in purkinje cells at 1:50-1:200 dilution.

## Gene Info — LINS1

**Entrez GeneID**[55180](#)**Protein Accession#**[Q8NG48](#)**Gene Name**

LINS1

**Gene Alias**

FLJ10583, WINS1

**Gene Description**

lines homolog 1 (Drosophila)

**Omim ID**[610350](#)**Gene Ontology**[Hyperlink](#)**Gene Summary**

The Drosophila segment polarity gene *lin* encodes a protein, lines, which plays important roles in development of the epidermis and hindgut. This gene encodes a protein containing a lines-like domain. This gene is located on chromosome 15 and clustered with the gene encoding ankyrin repeat and SOCS box-containing protein 7. Multiple transcript variants encoding the same protein have been found for this gene. [provided by RefSeq]

**Other Designations**

WINS1 protein with Drosophila Lines (Lin) homologous domain|lines homolog 1

## Disease

- [Tobacco Use Disorder](#)