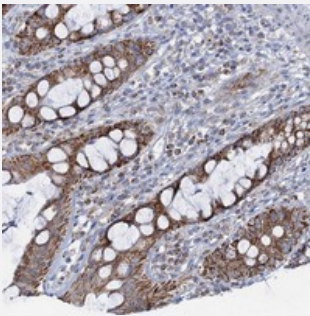


C2CD3 polyclonal antibody

Catalog # PAB23304 Size 100 uL

Applications



Immunohistochemistry (Formalin/PFA-fixed paraffin-embedded sections)

Immunohistochemical staining of human rectum with C2CD3 polyclonal antibody (Cat # PAB23304) shows strong cytoplasmic positivity in granular pattern in glandular cells at 1:200-1:500 dilution.

Specification

Product Description	Rabbit polyclonal antibody raised against recombinant C2CD3.
Immunogen	Recombinant protein corresponding to amino acids of human C2CD3.
Sequence	ELMKSSFLSSPERAVNPHLPRQGSPSQSLVACECEASKARVGGESASANPQPIPCPTLSGAQ QSSTFVGWSSPQTDQNKEPKS
Host	Rabbit
Reactivity	Human
Form	Liquid
Purification	Antigen affinity purification
Isotype	IgG
Recommend Usage	Immunohistochemistry (1:200-1:500) The optimal working dilution should be determined by the end user.
Storage Buffer	In PBS, pH 7.2 (40% glycerol, 0.02% sodium azide)

Storage Instruction

Store at 4°C. For long term storage store at -20°C.
Aliquot to avoid repeated freezing and thawing.

Note

This product contains sodium azide: a POISONOUS AND HAZARDOUS SUBSTANCE which should be handled by trained staff only.

Applications

- Immunohistochemistry (Formalin/PFA-fixed paraffin-embedded sections)

Immunohistochemical staining of human rectum with C2CD3 polyclonal antibody (Cat # PAB23304) shows strong cytoplasmic positivity in granular pattern in glandular cells at 1:200-1:500 dilution.

Gene Info — C2CD3

Entrez GeneID[26005](#)**Protein Accession#**[Q4AC94](#)**Gene Name**

C2CD3

Gene Alias

DKFZp586P0123, FLJ34770

Gene Description

C2 calcium-dependent domain containing 3

Gene Ontology[Hyperlink](#)**Other Designations**

-