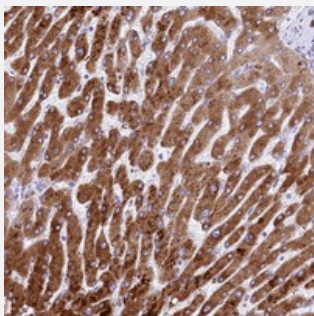


# RDH16 polyclonal antibody

Catalog # PAB23300      Size 100 uL

## Applications



### Immunohistochemistry (Formalin/PFA-fixed paraffin-embedded sections)

Immunohistochemical staining of human liver with RDH16 polyclonal antibody (Cat # PAB23300) shows strong cytoplasmic positivity in hepatocytes at 1:50-1:200 dilution.

## Specification

Product Description	Rabbit polyclonal antibody raised against recombinant RDH16.
Immunogen	Recombinant protein corresponding to amino acids of human RDH16.
Sequence	GVKVAMIEPGYFKTAVTSKERFLKSFLEWDRSSPEVKEAYGEK FVADYKKS AEQMEQKCTQDL SLVT
Host	Rabbit
Reactivity	Human
Form	Liquid
Purification	Antigen affinity purification
Isotype	IgG
Recommend Usage	Immunohistochemistry (1:50-1:200) The optimal working dilution should be determined by the end user.
Storage Buffer	In PBS, pH 7.2 (40% glycerol, 0.02% sodium azide)

**Storage Instruction**

Store at 4°C. For long term storage store at -20°C.  
Aliquot to avoid repeated freezing and thawing.

**Note**

This product contains sodium azide: a POISONOUS AND HAZARDOUS SUBSTANCE which should be handled by trained staff only.

## Applications

- Immunohistochemistry (Formalin/PFA-fixed paraffin-embedded sections)

Immunohistochemical staining of human liver with RDH16 polyclonal antibody (Cat # PAB23300) shows strong cytoplasmic positivity in hepatocytes at 1:50-1:200 dilution.

## Gene Info — RDH16

**Entrez GeneID**[8608](#)**Protein Accession#**[O75452](#)**Gene Name**

RDH16

**Gene Alias**

RODH-4, SDR9C8

**Gene Description**

retinol dehydrogenase 16 (all-trans)

**Gene Ontology**[Hyperlink](#)**Gene Summary**

member 8

**Other Designations**

microsomal NAD<sup>+</sup>-dependent retinol dehydrogenase 4|retinol dehydrogenase 16|retinol dehydrogenase 16 (all-trans and 13-cis)|short chain dehydrogenase/reductase family 9C, member 8

## Pathway

- [Metabolic pathways](#)
- [Retinol metabolism](#)