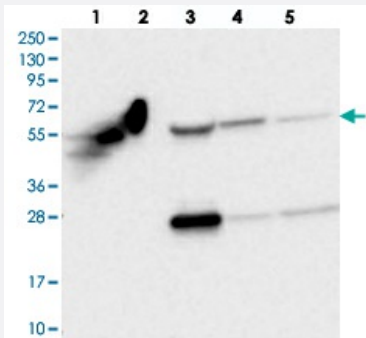


OTUD1 polyclonal antibody

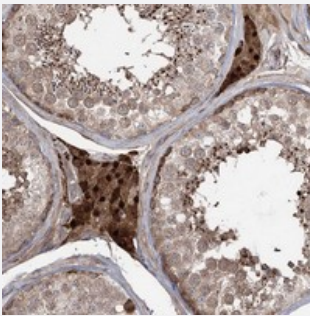
Catalog # PAB23298 Size 100 uL

Applications



Western Blot

Western blot analysis of Lane 1: RT-4, Lane 2: U-251 MG, Lane 3: Human Plasma, Lane 4: Liver, Lane 5: Tonsil with OTUD1 polyclonal antibody (Cat # PAB23298) at 1:250-1:500 dilution.



Immunohistochemistry (Formalin/PFA-fixed paraffin-embedded sections)

Immunohistochemical staining of human testis with OTUD1 polyclonal antibody (Cat # PAB23298) shows strong nuclear and cytoplasmic positivity in Leydig cells at 1:20-1:50 dilution.

Specification

| | |
|---------------------|---|
| Product Description | Rabbit polyclonal antibody raised against recombinant OTUD1. |
| Immunogen | Recombinant protein corresponding to amino acids of human OTUD1. |
| Sequence | SSAAEPVMSRSDPRDEKLALYLAEVEKQDKYLRQRNKYRFHIIPDGNCLYRAVSKTVYGDQSLHR ELREQTVHYADHLDHFSPLIEGDVGEFIIAAAQD |
| Host | Rabbit |
| Reactivity | Human |
| Form | Liquid |

| | |
|----------------------------|--|
| Purification | Antigen affinity purification |
| Isotype | IgG |
| Recommend Usage | Immunohistochemistry (1:20-1:50) Western Blot (1:250-1:500) The optimal working dilution should be determined by the end user. |
| Storage Buffer | In PBS, pH 7.2 (40% glycerol, 0.02% sodium azide) |
| Storage Instruction | Store at 4°C. For long term storage store at -20°C. Aliquot to avoid repeated freezing and thawing. |
| Note | This product contains sodium azide: a POISONOUS AND HAZARDOUS SUBSTANCE which should be handled by trained staff only. |

Applications

- Western Blot

Western blot analysis of Lane 1: RT-4, Lane 2: U-251 MG, Lane 3: Human Plasma, Lane 4: Liver, Lane 5: Tonsil with OTUD1 polyclonal antibody (Cat # PAB23298) at 1:250-1:500 dilution.

- Immunohistochemistry (Formalin/PFA-fixed paraffin-embedded sections)

Immunohistochemical staining of human testis with OTUD1 polyclonal antibody (Cat # PAB23298) shows strong nuclear and cytoplasmic positivity in Leydig cells at 1:20-1:50 dilution.

Gene Info — OTUD1

| | |
|---------------------------|--|
| Entrez GeneID | 220213 |
| Protein Accession# | Q5VV17 |
| Gene Name | OTUD1 |
| Gene Alias | DUBA7, OTDC1 |
| Gene Description | OTU domain containing 1 |
| Gene Ontology | Hyperlink |
| Gene Summary | Deubiquitinating enzymes (DUBs; see MIM 603478) are proteases that specifically cleave ubiquitin (MIM 191339) linkages, negating the action of ubiquitin ligases. DUBA7 belongs to a DUB subfamily characterized by an ovarian tumor (OTU) domain.[supplied by OMIM] |
| Other Designations | - |