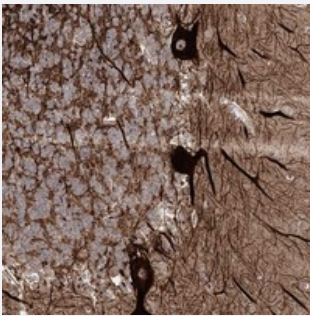


# FAM178A polyclonal antibody

Catalog # PAB23297      Size 100 uL

## Applications



### Immunohistochemistry (Formalin/PFA-fixed paraffin-embedded sections)

Immunohistochemical staining of human cerebellum with FAM178A polyclonal antibody (Cat # PAB23297) shows strong cytoplasmic and nuclear positivity in Purkinje cells at 1:500-1:1000 dilution.

## Specification

Product Description	Rabbit polyclonal antibody raised against recombinant FAM178A.
Immunogen	Recombinant protein corresponding to amino acids of human FAM178A.
Sequence	SSDSWEPTSAGSKQNKFPKPKRKRNSVDSLKSTRESMIPKARESFLKRPDGP HQKEKFIKIAL KTPGDVLRLEDISKEPSDE
Host	Rabbit
Reactivity	Human
Form	Liquid
Purification	Antigen affinity purification
Isotype	IgG
Recommend Usage	Immunohistochemistry (1:500-1:1000) The optimal working dilution should be determined by the end user.
Storage Buffer	In PBS, pH 7.2 (40% glycerol, 0.02% sodium azide)

**Storage Instruction**

Store at 4°C. For long term storage store at -20°C.  
Aliquot to avoid repeated freezing and thawing.

**Note**

This product contains sodium azide: a POISONOUS AND HAZARDOUS SUBSTANCE which should be handled by trained staff only.

## Applications

- Immunohistochemistry (Formalin/PFA-fixed paraffin-embedded sections)

Immunohistochemical staining of human cerebellum with FAM178A polyclonal antibody (Cat # PAB23297) shows strong cytoplasmic and nuclear positivity in purkinje cells at 1:500-1:1000 dilution.

## Gene Info — FAM178A

**Entrez GeneID** [55719](#)

**Protein Accession#** [Q8IX21](#)

**Gene Name** FAM178A

**Gene Alias** C10orf6, MGC90157

**Gene Description** family with sequence similarity 178, member A

**Gene Ontology** [Hyperlink](#)

**Gene Summary** O

**Other Designations** OTTHUMP00000020300|hypothetical protein LOC55719

## Disease

- [Alzheimer Disease](#)
- [Genetic Predisposition to Disease](#)