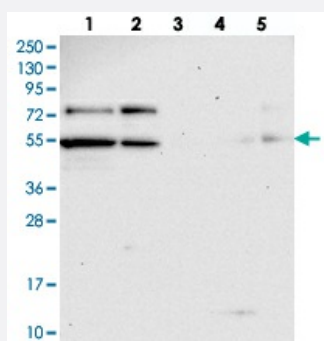


KANSL2 polyclonal antibody

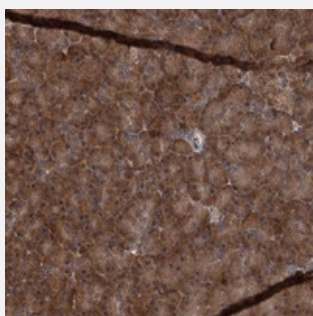
Catalog # PAB23296 Size 100 uL

Applications



Western Blot

Western blot analysis of Lane 1: RT-4, Lane 2: U-251 MG, Lane 3: Human Plasma, Lane 4: Liver, Lane 5: Tonsil with KANSL2 polyclonal antibody (Cat # PAB23296).



Immunohistochemistry (Formalin/PFA-fixed paraffin-embedded sections)

Immunohistochemical staining of human pancreas with KANSL2 polyclonal antibody (Cat # PAB23296) shows strong cytoplasmic positivity in exocrine glandular cells.

Specification

Product Description	Rabbit polyclonal antibody raised against recombinant KANSL2.
Immunogen	Recombinant protein corresponding to amino acids of human KANSL2.
Sequence	MKKTNP GPVGETLLCQLSSYAKTELGSQTPESSRSEASRILDEDSWSDGEQEPITVDQTWRGDP DSEADSIDSDQEDP
Host	Rabbit
Reactivity	Human
Form	Liquid

Purification	Antigen affinity purification
Isotype	IgG
Recommend Usage	Immunohistochemistry (1:500-1:1000) Western Blot (1:250-1:500) The optimal working dilution should be determined by the end user.
Storage Buffer	In PBS, pH 7.2 (40% glycerol, 0.02% sodium azide)
Storage Instruction	Store at 4°C. For long term storage store at -20°C. Aliquot to avoid repeated freezing and thawing.
Note	This product contains sodium azide: a POISONOUS AND HAZARDOUS SUBSTANCE which should be handled by trained staff only.

Applications

- Western Blot

Western blot analysis of Lane 1: RT-4, Lane 2: U-251 MG, Lane 3: Human Plasma, Lane 4: Liver, Lane 5: Tonsil with KANSL2 polyclonal antibody (Cat # PAB23296).

- Immunohistochemistry (Formalin/PFA-fixed paraffin-embedded sections)

Immunohistochemical staining of human pancreas with KANSL2 polyclonal antibody (Cat # PAB23296) shows strong cytoplasmic positivity in exocrine glandular cells.

Gene Info — KANSL2

Entrez GeneID	54934
Protein Accession#	Q9H9L4
Gene Name	KANSL2
Gene Alias	C12orf41, NSL2
Gene Description	KAT8 regulatory NSL complex subunit 2
Gene Ontology	Hyperlink
Other Designations	NSL complex protein NSL2; non-specific lethal 2 homolog