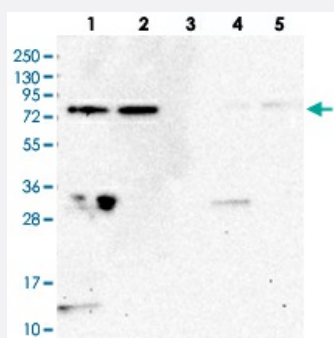


WDR48 polyclonal antibody

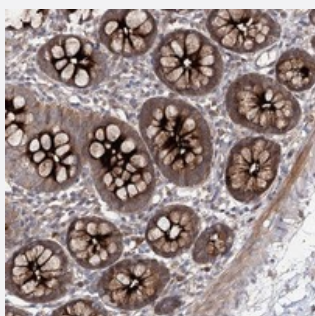
Catalog # PAB23285 Size 100 uL

Applications



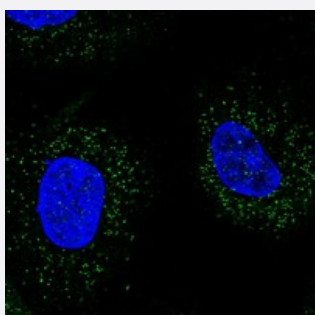
Western Blot

Western blot analysis of Lane 1: RT-4, Lane 2: U-251 MG, Lane 3: Human Plasma, Lane 4: Liver, Lane 5: Tonsil with WDR48 polyclonal antibody (Cat # PAB23285) at 1:250-1:500 dilution.



Immunohistochemistry (Formalin/PFA-fixed paraffin-embedded sections)

Immunohistochemical staining of human colon with WDR48 polyclonal antibody (Cat # PAB23285) shows strong cytoplasmic positivity in glandular cells at 1:20-1:50 dilution.



Immunofluorescence

Immunofluorescent staining of human cell line A-431 with WDR48 polyclonal antibody (Cat # PAB23285) at 1-4 ug/mL dilution shows positivity in vesicles.

Specification

Product Description

Rabbit polyclonal antibody raised against recombinant WDR48.

Immunogen

Recombinant protein corresponding to amino acids of human WDR48.

Sequence	SIIQCHILNDKRHILTKDTNNNVAYWDVLKACKVEDLGKVDFEDEIKRFRKMVYVPNWFSVDLKTG MLTITLDESDCFAAWWSAKDAGF
Host	Rabbit
Reactivity	Human, Mouse
Form	Liquid
Purification	Antigen affinity purification
Isotype	IgG
Recommend Usage	Immunohistochemistry (1:20-1:50) Western Blot (1:250-1:500) Immunofluorescence (1-4 ug/mL) The optimal working dilution should be determined by the end user.
Storage Buffer	In PBS, pH 7.2 (40% glycerol, 0.02% sodium azide)
Storage Instruction	Store at 4°C. For long term storage store at -20°C. Aliquot to avoid repeated freezing and thawing.
Note	This product contains sodium azide: a POISONOUS AND HAZARDOUS SUBSTANCE which should be handled by trained staff only.

Applications

- Western Blot

Western blot analysis of Lane 1: RT-4, Lane 2: U-251 MG, Lane 3: Human Plasma, Lane 4: Liver, Lane 5: Tonsil with WDR48 polyclonal antibody (Cat # PAB23285) at 1:250-1:500 dilution.

- Immunohistochemistry (Formalin/PFA-fixed paraffin-embedded sections)

Immunohistochemical staining of human colon with WDR48 polyclonal antibody (Cat # PAB23285) shows strong cytoplasmic positivity in glandular cells at 1:20-1:50 dilution.

- Immunofluorescence

Immunofluorescent staining of human cell line A-431 with WDR48 polyclonal antibody (Cat # PAB23285) at 1-4 ug/mL dilution shows positivity in vesicles.

Gene Info — WDR48

Entrez GeneID [57599](#)

Protein Accession# [Q8TAF3](#)

Gene Name	WDR48
Gene Alias	DKFZp686G1794, KIAA1449, P80
Gene Description	WD repeat domain 48
Gene Ontology	Hyperlink
Other Designations	WD repeat endosomal protein