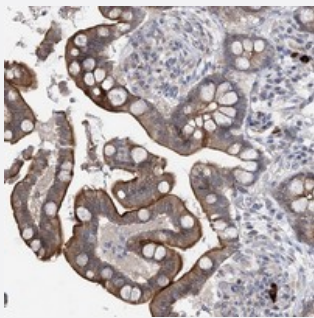


# RICS polyclonal antibody

Catalog # PAB23276      Size 100 uL

## Applications



### Immunohistochemistry (Formalin/PFA-fixed paraffin-embedded sections)

Immunohistochemical staining of human colon with RICS polyclonal antibody (Cat # PAB23276) shows strong cytoplasmic and membrane positivity in glandular cells at 1:50-1:200 dilution.

## Specification

Product Description	Rabbit polyclonal antibody raised against recombinant RICS.
Immunogen	Recombinant protein corresponding to amino acids of human RICS.
Sequence	ERDPSVLYQYQPHGKRQSSVTVVSQYDNLEDYHSLPQHQRGVFGGGGMGTYPGPFHPQSRT YATALGQGAFLPAELSLQHPETQIHAE
Host	Rabbit
Reactivity	Human
Form	Liquid
Purification	Antigen affinity purification
Isotype	IgG
Recommend Usage	Immunohistochemistry (1:50-1:200) The optimal working dilution should be determined by the end user.
Storage Buffer	In PBS, pH 7.2 (40% glycerol, 0.02% sodium azide)

**Storage Instruction**

Store at 4°C. For long term storage store at -20°C.  
Aliquot to avoid repeated freezing and thawing.

**Note**

This product contains sodium azide: a POISONOUS AND HAZARDOUS SUBSTANCE which should be handled by trained staff only.

## Applications

- Immunohistochemistry (Formalin/PFA-fixed paraffin-embedded sections)

Immunohistochemical staining of human colon with RICS polyclonal antibody (Cat # PAB23276) shows strong cytoplasmic and membrane positivity in glandular cells at 1:50-1:200 dilution.

## Gene Info — RICS

**Entrez GeneID**[9743](#)**Protein Accession#**[A7KAX9](#)**Gene Name**

RICS

**Gene Alias**

GC-GAP, GRIT, KIAA0712, MGC1892, p200RhoGAP, p250GAP

**Gene Description**

Rho GTPase-activating protein

**Omim ID**[608541](#)**Gene Ontology**[Hyperlink](#)**Gene Summary**

RICS is a neuron-associated GTPase-activating protein that may regulate dendritic spine morphology and strength by modulating Rho GTPase (see RHOA; MIM 165390) activity (Okabe et al., 2003 [PubMed 12531901]).[supplied by OMIM]

**Other Designations**

GAB-associated CDC42|RhoGAP involved in the -catenin-N-cadherin and NMDA receptor signaling|brain-specific Rho GTP-ase-activating protein|rac GTPase activating protein

## Disease

- [Disease Progression](#)
- [Disease Susceptibility](#)
- [HIV Infections](#)