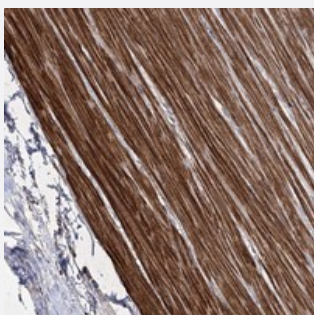


CCDC53 polyclonal antibody

Catalog # PAB23266 Size 100 uL

Applications



Immunohistochemistry (Formalin/PFA-fixed paraffin-embedded sections)

Immunohistochemical staining of human smooth muscle with CCDC53 polyclonal antibody (Cat # PAB23266) shows strong cytoplasmic positivity in smooth muscle cells at 1:10-1:20 dilution.

Specification

Product Description	Rabbit polyclonal antibody raised against recombinant CCDC53.
Immunogen	Recombinant protein corresponding to amino acids of human CCDC53.
Sequence	LMGSGIDLTkVPAIQQKRTVAFLNQFVVHTVQFLNRFSTVCEEKLADLSLRlQQIETTLNILDakLSSI PGLDDVTVEVSP
Host	Rabbit
Reactivity	Human
Form	Liquid
Purification	Antigen affinity purification
Isotype	IgG
Recommend Usage	Immunohistochemistry (1:10-1:20) The optimal working dilution should be determined by the end user.
Storage Buffer	In PBS, pH 7.2 (40% glycerol, 0.02% sodium azide)

Storage Instruction

Store at 4°C. For long term storage store at -20°C.
Aliquot to avoid repeated freezing and thawing.

Note

This product contains sodium azide: a POISONOUS AND HAZARDOUS SUBSTANCE which should be handled by trained staff only.

Applications

- Immunohistochemistry (Formalin/PFA-fixed paraffin-embedded sections)

Immunohistochemical staining of human smooth muscle with CCDC53 polyclonal antibody (Cat # PAB23266) shows strong cytoplasmic positivity in smooth muscle cells at 1:10-1:20 dilution.

Gene Info — CCDC53

Entrez GeneID [51019](#)

Protein Accession# [Q9Y3C0](#)

Gene Name CCDC53

Gene Alias CGI-116

Gene Description coiled-coil domain containing 53

Gene Ontology [Hyperlink](#)

Other Designations -