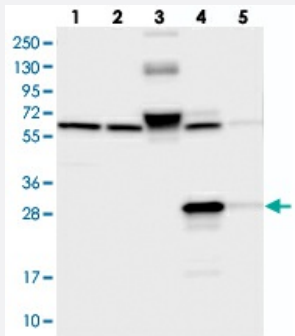


# ECHDC3 polyclonal antibody

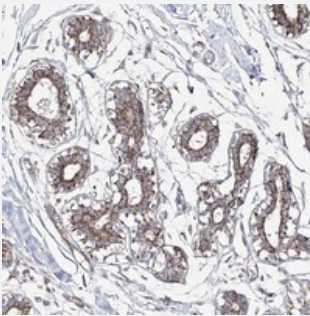
Catalog # PAB23264      Size 100 uL

## Applications



### Western Blot

Western blot analysis of Lane 1: RT-4, Lane 2: U-251 MG, Lane 3: Human Plasma, Lane 4: Liver, Lane 5: Tonsil with ECHDC3 polyclonal antibody (Cat # PAB23264) at 1:250-1:500 dilution.



### Immunohistochemistry (Formalin/PFA-fixed paraffin-embedded sections)

Immunohistochemical staining of human breast with ECHDC3 polyclonal antibody (Cat # PAB23264) shows moderate granular cytoplasmic positivity in glandular cells at 1:200-1:500 dilution.

## Specification

<b>Product Description</b>	Rabbit polyclonal antibody raised against recombinant ECHDC3.
<b>Immunogen</b>	Recombinant protein corresponding to amino acids of human ECHDC3.
<b>Sequence</b>	FTGEPISAEALLHGLLSKVVPEAELQEETMRIARKIASLSRPVVS LGKATFYKQLPQDLGTAYLT SQAMVDNLALRDGQEGITAF LQKRKPVWSH
<b>Host</b>	Rabbit
<b>Reactivity</b>	Human
<b>Form</b>	Liquid

<b>Purification</b>	Antigen affinity purification
<b>Isotype</b>	IgG
<b>Recommend Usage</b>	Immunohistochemistry (1:200-1:500) Western Blot (1:250-1:500) The optimal working dilution should be determined by the end user.
<b>Storage Buffer</b>	In PBS, pH 7.2 (40% glycerol, 0.02% sodium azide)
<b>Storage Instruction</b>	Store at 4°C. For long term storage store at -20°C. Aliquot to avoid repeated freezing and thawing.
<b>Note</b>	This product contains sodium azide: a POISONOUS AND HAZARDOUS SUBSTANCE which should be handled by trained staff only.

## Applications

- Western Blot

Western blot analysis of Lane 1: RT-4, Lane 2: U-251 MG, Lane 3: Human Plasma, Lane 4: Liver, Lane 5: Tonsil with ECHDC3 polyclonal antibody (Cat # PAB23264) at 1:250-1:500 dilution.

- Immunohistochemistry (Formalin/PFA-fixed paraffin-embedded sections)

Immunohistochemical staining of human breast with ECHDC3 polyclonal antibody (Cat # PAB23264) shows moderate granular cytoplasmic positivity in glandular cells at 1:200-1:500 dilution.

## Gene Info — ECHDC3

<b>Entrez GeneID</b>	<a href="#">79746</a>
<b>Protein Accession#</b>	<a href="#">Q96DC8</a>
<b>Gene Name</b>	ECHDC3
<b>Gene Alias</b>	FLJ20909
<b>Gene Description</b>	enoyl Coenzyme A hydratase domain containing 3
<b>Gene Ontology</b>	<a href="#">Hyperlink</a>
<b>Other Designations</b>	OTTHUMP00000019084