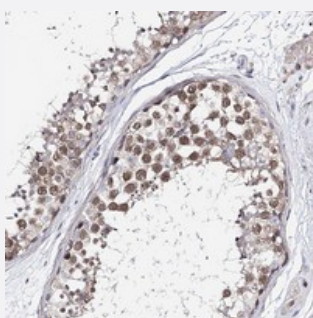


TEX12 polyclonal antibody

Catalog # PAB23259 Size 100 uL

Applications



Immunohistochemistry (Formalin/PFA-fixed paraffin-embedded sections)

Immunohistochemical staining of human testis with TEX12 polyclonal antibody (Cat # PAB23259) shows moderate nuclear positivity in cells in seminiferous ducts.

Specification

Product Description	Rabbit polyclonal antibody raised against recombinant TEX12.
Immunogen	Recombinant protein corresponding to amino acids of human TEX12.
Sequence	MANHLVKPDNRNCKRPRELESPVPDSPQLSSLGKSDSSFSEISGLFYKDEALEKDLNDVS
Host	Rabbit
Reactivity	Human
Form	Liquid
Purification	Antigen affinity purification
Isotype	IgG
Recommend Usage	Immunohistochemistry (1:200-1:500) The optimal working dilution should be determined by the end user.
Storage Buffer	In PBS, pH 7.2 (40% glycerol, 0.02% sodium azide)
Storage Instruction	Store at 4°C. For long term storage store at -20°C. Aliquot to avoid repeated freezing and thawing.

Note

This product contains sodium azide: a POISONOUS AND HAZARDOUS SUBSTANCE which should be handled by trained staff only.

Applications

- Immunohistochemistry (Formalin/PFA-fixed paraffin-embedded sections)

Immunohistochemical staining of human testis with TEX12 polyclonal antibody (Cat # PAB23259) shows moderate nuclear positivity in cells in seminiferous ducts.

Gene Info — TEX12

Entrez GeneID [56158](#)

Protein Accession# [Q9BXU0](#)

Gene Name TEX12

Gene Alias -

Gene Description testis expressed 12

Omim ID [605791](#)

Gene Ontology [Hyperlink](#)

Gene Summary This gene is similar to a mouse gene that is expressed in the testis. [provided by RefSeq]

Other Designations testis expressed sequence 12|testis-expressed sequence 12 protein variant 2|testis-expressed sequence 12 protein variant 3

Disease

- [Genetic Predisposition to Disease](#)
- [Hematologic Diseases](#)
- [Occupational Diseases](#)