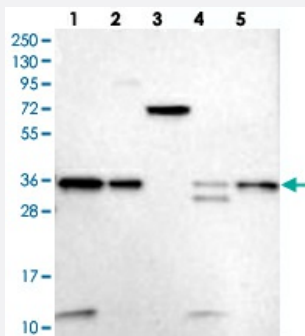


# VPS37B polyclonal antibody

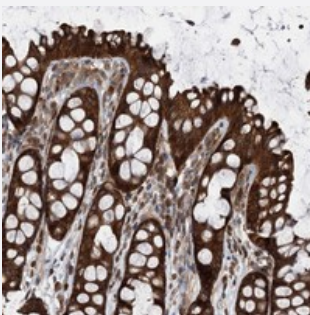
Catalog # PAB23244      Size 100 uL

## Applications



### Western Blot

Western blot analysis of Lane 1: RT-4, Lane 2: U-251 MG, Lane 3: Human Plasma, Lane 4: Liver, Lane 5: Tonsil with VPS37B polyclonal antibody (Cat # PAB23244).



### Immunohistochemistry (Formalin/PFA-fixed paraffin-embedded sections)

Immunohistochemical staining of human colon with VPS37B polyclonal antibody (Cat # PAB23244) shows strong cytoplasmic positivity in glandular cells.

## Specification

Product Description	Rabbit polyclonal antibody raised against recombinant VPS37B.
Immunogen	Recombinant protein corresponding to amino acids of human VPS37B.
Sequence	IEEDTENMAEKFLDGELPLDSFIDVYQSKRKLAHMRRVKIEKLQEMVLKGQRLPQALAPLPRLPE LAPTAPLPYPAP
Host	Rabbit
Reactivity	Human
Form	Liquid

Purification	Antigen affinity purification
Isotype	IgG
Recommend Usage	Immunohistochemistry (1:50-1:200) Western Blot (1:250-1:500) The optimal working dilution should be determined by the end user.
Storage Buffer	In PBS, pH 7.2 (40% glycerol, 0.02% sodium azide)
Storage Instruction	Store at 4°C. For long term storage store at -20°C. Aliquot to avoid repeated freezing and thawing.
Note	This product contains sodium azide: a POISONOUS AND HAZARDOUS SUBSTANCE which should be handled by trained staff only.

## Applications

- Western Blot

Western blot analysis of Lane 1: RT-4, Lane 2: U-251 MG, Lane 3: Human Plasma, Lane 4: Liver, Lane 5: Tonsil with VPS37B polyclonal antibody (Cat # PAB23244).

- Immunohistochemistry (Formalin/PFA-fixed paraffin-embedded sections)

Immunohistochemical staining of human colon with VPS37B polyclonal antibody (Cat # PAB23244) shows strong cytoplasmic positivity in glandular cells.

## Gene Info — VPS37B

Entrez GeneID	<a href="#">79720</a>
Protein Accession#	<a href="#">Q9H9H4</a>
Gene Name	VPS37B
Gene Alias	FLJ12750
Gene Description	vacuolar protein sorting 37 homolog B (S. cerevisiae)
Omim ID	<a href="#">610037</a>
Gene Ontology	<a href="#">Hyperlink</a>
Other Designations	vacuolar protein sorting 37B

## Pathway

- [Endocytosis](#)

## Disease

- [Tobacco Use Disorder](#)