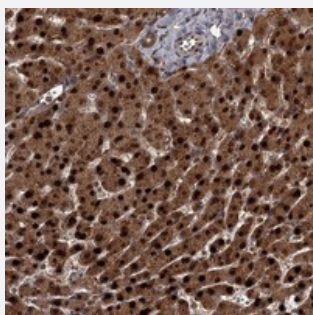


# TBC1D23 polyclonal antibody

Catalog # PAB23230      Size 100 uL

## Applications



### Immunohistochemistry (Formalin/PFA-fixed paraffin-embedded sections)

Immunohistochemical staining of human liver with TBC1D23 polyclonal antibody (Cat # PAB23230) shows strong cytoplasmic and nuclear positivity in hepatocytes at 1:10-1:20 dilution.

## Specification

Product Description	Rabbit polyclonal antibody raised against recombinant TBC1D23.
Immunogen	Recombinant protein corresponding to amino acids of human TBC1D23.
Sequence	HLSTAFHLDSDLMLQNPSEFAQSVKSLLEAQKQSIESGSIAGGEHLCFMGSGREEEDMYMNMVL AHFLQKNKEYVSIASGGFMALQQHLADINVDGPENGY
Host	Rabbit
Reactivity	Human
Form	Liquid
Purification	Antigen affinity purification
Isotype	IgG
Recommend Usage	Immunohistochemistry (1:10-1:20) The optimal working dilution should be determined by the end user.
Storage Buffer	In PBS, pH 7.2 (40% glycerol, 0.02% sodium azide)

**Storage Instruction**

Store at 4°C. For long term storage store at -20°C.  
Aliquot to avoid repeated freezing and thawing.

**Note**

This product contains sodium azide: a POISONOUS AND HAZARDOUS SUBSTANCE which should be handled by trained staff only.

## Applications

- Immunohistochemistry (Formalin/PFA-fixed paraffin-embedded sections)

Immunohistochemical staining of human liver with TBC1D23 polyclonal antibody (Cat # PAB23230) shows strong cytoplasmic and nuclear positivity in hepatocytes at 1:10-1:20 dilution.

## Gene Info — TBC1D23

**Entrez GeneID** [55773](#)

**Protein Accession#** [Q9NUY8](#)

**Gene Name** TBC1D23

**Gene Alias** DKFZp667G062, FLJ11046, NS4ATP1

**Gene Description** TBC1 domain family, member 23

**Gene Ontology** [Hyperlink](#)

**Gene Summary** O

**Other Designations** HCV nonstructural protein 4A-transactivated protein 1