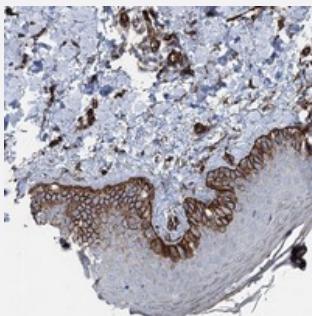


IQSEC1 polyclonal antibody

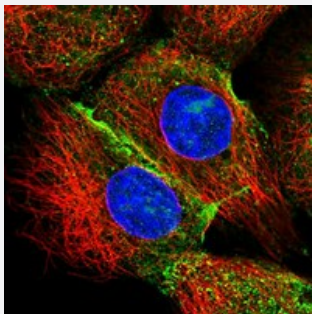
Catalog # PAB23229 Size 100 uL

Applications



Immunohistochemistry (Formalin/PFA-fixed paraffin-embedded sections)

Immunohistochemical staining of human skin with IQSEC1 polyclonal antibody (Cat # PAB23229) shows strong cytoplasmic positivity in basal cells of squamous epithelium.



Immunofluorescence

Immunofluorescent staining of human cell line A-431 with IQSEC1 polyclonal antibody (Cat # PAB23229) at 1-4 ug/mL dilution shows positivity in nucleoli, vesicles and cell junctions.

Specification

Product Description	Rabbit polyclonal antibody raised against recombinant IQSEC1.
Immunogen	Recombinant protein corresponding to amino acids of human IQSEC1.
Sequence	PSSETGTSLDPSAYPQGPLVPGSSLSPDHYEHTSVGAYGLYSGPPGQQQRTTRPKLQHSTSILRKQAE
Host	Rabbit
Reactivity	Human
Form	Liquid

Purification	Antigen affinity purification
Isotype	IgG
Recommend Usage	Immunohistochemistry (1:50-1:200) Immunofluorescence (1-4 ug/mL) The optimal working dilution should be determined by the end user.
Storage Buffer	In PBS, pH 7.2 (40% glycerol, 0.02% sodium azide)
Storage Instruction	Store at 4°C. For long term storage store at -20°C. Aliquot to avoid repeated freezing and thawing.
Note	This product contains sodium azide: a POISONOUS AND HAZARDOUS SUBSTANCE which should be handled by trained staff only.

Applications

- Immunohistochemistry (Formalin/PFA-fixed paraffin-embedded sections)

Immunohistochemical staining of human skin with IQSEC1 polyclonal antibody (Cat # PAB23229) shows strong cytoplasmic positivity in basal cells of squamous epithelium.

- Immunofluorescence

Immunofluorescent staining of human cell line A-431 with IQSEC1 polyclonal antibody (Cat # PAB23229) at 1-4 ug/mL dilution shows positivity in nucleoli, vesicles and cell junctions.

Gene Info — IQSEC1

Entrez GeneID	9922
Protein Accession#	Q6DN90
Gene Name	IQSEC1
Gene Alias	ARFGEP100, KIAA0763
Gene Description	IQ motif and Sec7 domain 1
Omim ID	610166
Gene Ontology	Hyperlink
Other Designations	-

Pathway

- [Endocytosis](#)