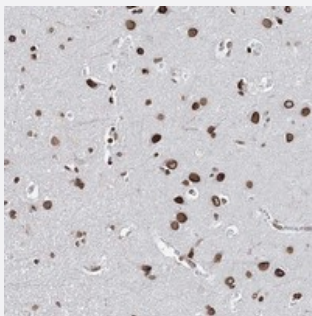


# C22orf9 polyclonal antibody

Catalog # PAB23221      Size 100 uL

## Applications



### Immunohistochemistry (Formalin/PFA-fixed paraffin-embedded sections)

Immunohistochemical staining of human cerebral cortex with C22orf9 polyclonal antibody (Cat # PAB23221) shows strong nuclear membrane positivity in neuronal cells.

## Specification

Product Description	Rabbit polyclonal antibody raised against recombinant C22orf9.
Immunogen	Recombinant protein corresponding to amino acids of human C22orf9.
Sequence	GCFKDDRIVFWTWMFSTYFMEKWAPRQDDMLFYVRRKLAYSGSESGADGRKAAEPEVEVEVY RRDSKKLPGLGDPDIDWEESVCLNLILQKLD
Host	Rabbit
Reactivity	Human
Form	Liquid
Purification	Antigen affinity purification
Isotype	IgG
Recommend Usage	Immunohistochemistry (1:200-1:500) The optimal working dilution should be determined by the end user.
Storage Buffer	In PBS, pH 7.2 (40% glycerol, 0.02% sodium azide)

**Storage Instruction**

Store at 4°C. For long term storage store at -20°C.  
Aliquot to avoid repeated freezing and thawing.

**Note**

This product contains sodium azide: a POISONOUS AND HAZARDOUS SUBSTANCE which should be handled by trained staff only.

## Applications

- Immunohistochemistry (Formalin/PFA-fixed paraffin-embedded sections)

Immunohistochemical staining of human cerebral cortex with C22orf9 polyclonal antibody (Cat # PAB23221) shows strong nuclear membrane positivity in neuronal cells.

## Gene Info — C22orf9

**Entrez GeneID**[23313](#)**Protein Accession#**[Q6ICG6](#)**Gene Name**

C22orf9

**Gene Alias**

-

**Gene Description**

chromosome 22 open reading frame 9

**Gene Ontology**[Hyperlink](#)**Other Designations**

OTTHUMP00000028950|hypothetical protein LOC23313