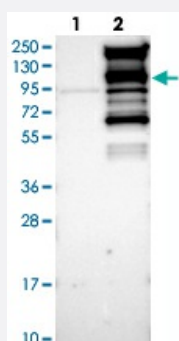


# WDR44 polyclonal antibody

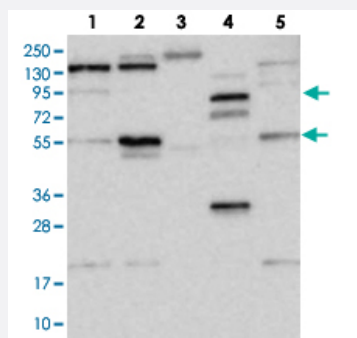
Catalog # PAB23219      Size 100 uL

## Applications



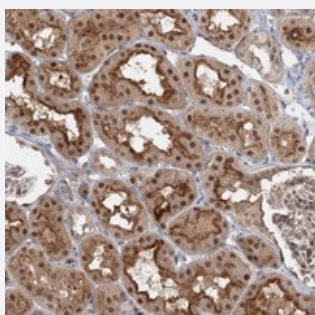
### Western Blot (Transfected lysate)

Western blot analysis of Lane 1: Negative control (vector only transfected HEK293T lysate), Lane 2: Over-expression Lysate (Co-expressed with a C-terminal myc-DDK tag (~3.1 kDa) in mammalian HEK293T cells) with WDR44 polyclonal antibody (Cat # PAB23219).



### Western Blot

Western blot analysis of WDR44 polyclonal antibody (Cat # PAB23219). Lane 1: RT-4, Lane 2: U-251 MG, Lane 3: human plasma, Lane 4: liver, Lane 5: tonsil.



### Immunohistochemistry (Formalin/PFA-fixed paraffin-embedded sections)

Immunohistochemical staining of human kidney with WDR44 polyclonal antibody (Cat # PAB23219) shows nuclear, cytoplasmic and membranous positivity in cells of tubules.

## Specification

### Product Description

Rabbit polyclonal antibody raised against recombinant WDR44.

### Immunogen

Recombinant protein corresponding to amino acids of human WDR44.

Sequence	MRMKYNTTEGRVSPSPSQESLSSSKSDTDTGVCSGTDEDPDCKNAPFRQRPFCYKYGHTADLLD LSWSKNYFLLSSSMDKTVR
Host	Rabbit
Reactivity	Human
Form	Liquid
Purification	Antigen affinity purification
Isotype	IgG
Recommend Usage	Immunohistochemistry (1:50-1:200) Western Blot (1:250-1:500) The optimal working dilution should be determined by the end user.
Storage Buffer	In PBS, pH 7.2 (40% glycerol, 0.02% sodium azide)
Storage Instruction	Store at 4°C. For long term storage store at -20°C. Aliquot to avoid repeated freezing and thawing.
Note	This product contains sodium azide: a POISONOUS AND HAZARDOUS SUBSTANCE which should be handled by trained staff only.

## Applications

- Western Blot (Transfected lysate)

Western blot analysis of Lane 1: Negative control (vector only transfected HEK293T lysate), Lane 2: Over-expression Lysate (Co-expressed with a C-terminal myc-DDK tag (~3.1 kDa) in mammalian HEK293T cells) with WDR44 polyclonal antibody (Cat # PAB23219).

- Western Blot

Western blot analysis of WDR44 polyclonal antibody (Cat # PAB23219).  
Lane 1: RT-4, Lane 2: U-251 MG, Lane 3: human plasma, Lane 4: liver, Lane 5: tonsil.

- Immunohistochemistry (Formalin/PFA-fixed paraffin-embedded sections)

Immunohistochemical staining of human kidney with WDR44 polyclonal antibody (Cat # PAB23219) shows nuclear, cytoplasmic and membranous positivity in cells of tubules.

## Gene Info — WDR44

Entrez GeneID [54521](#)

Protein Accession# [Q5JSH3](#)

Gene Name	WDR44
Gene Alias	DKFZp686L20145, MGC26781, RAB11BP, RPH11
Gene Description	WD repeat domain 44
Gene Ontology	<a href="#">Hyperlink</a>
Other Designations	OTTHUMP00000023886 OTTHUMP00000062781 WD repeat domain 44 protein

## Disease

- [Celiac Disease](#)
- [Genetic Predisposition to Disease](#)