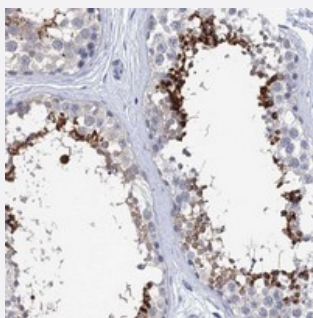


SPATA7 polyclonal antibody

Catalog # PAB23217 Size 100 uL

Applications



Immunohistochemistry (Formalin/PFA-fixed paraffin-embedded sections)

Immunohistochemical staining of human testis with SPATA7 polyclonal antibody (Cat # PAB23217) shows strong cytoplasmic positivity in a subset of cells in seminiferous tubules.

Specification

Product Description	Rabbit polyclonal antibody raised against recombinant SPATA7.
Immunogen	Recombinant protein corresponding to amino acids of human SPATA7.
Sequence	RHLLHVLKVDLGCTSEENSVKQNDVDMLNVDFEFKAGNSEPNELKNESEVTIQQERQQYQKALD MLLSAPKDENEIFPSPTEFFMPIYKSKHSEGV
Host	Rabbit
Reactivity	Human
Form	Liquid
Purification	Antigen affinity purification
Isotype	IgG
Recommend Usage	Immunohistochemistry (1:500-1:1000) The optimal working dilution should be determined by the end user.
Storage Buffer	In PBS, pH 7.2 (40% glycerol, 0.02% sodium azide)

Storage Instruction

Store at 4°C. For long term storage store at -20°C.
Aliquot to avoid repeated freezing and thawing.

Note

This product contains sodium azide: a POISONOUS AND HAZARDOUS SUBSTANCE which should be handled by trained staff only.

Applications

- Immunohistochemistry (Formalin/PFA-fixed paraffin-embedded sections)

Immunohistochemical staining of human testis with SPATA7 polyclonal antibody (Cat # PAB23217) shows strong cytoplasmic positivity in a subset of cells in seminiferous tubules.

Gene Info — SPATA7

Entrez GeneID[55812](#)**Protein Accession#**[Q9P0W8](#)**Gene Name**

SPATA7

Gene Alias

DKFZp686D07199, HSD-3.1, HSD3, MGC102934

Gene Description

spermatogenesis associated 7

Omim ID[609868](#)**Gene Ontology**[Hyperlink](#)**Other Designations**

spermatogenesis-associated protein 7