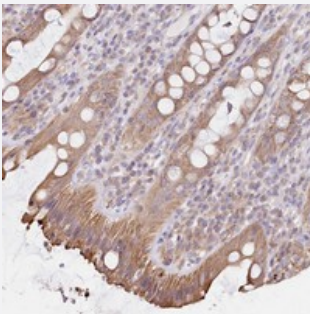


FAM208B polyclonal antibody

Catalog # PAB23209 Size 100 uL

Applications



Immunohistochemistry (Formalin/PFA-fixed paraffin-embedded sections)

Immunohistochemical staining of human rectum with FAM208B polyclonal antibody (Cat # PAB23209) shows moderate cytoplasmic positivity in glandular cells at 1:50-1:200 dilution.

Specification

| | |
|---------------------|---|
| Product Description | Rabbit polyclonal antibody raised against recombinant FAM208B. |
| Immunogen | Recombinant protein corresponding to amino acids of human FAM208B. |
| Sequence | AVKKEEKCVPPYVQIRDLHGILRTYANFSITKELKDTMRTSHGLRRHPSFSANGLPSSWTSTWQ VADDLTQNTLDLEYLRFAHKLKQTIKNGDSQHSA |
| Host | Rabbit |
| Reactivity | Human |
| Form | Liquid |
| Purification | Antigen affinity purification |
| Isotype | IgG |
| Recommend Usage | Immunohistochemistry (1:50-1:200) The optimal working dilution should be determined by the end user. |
| Storage Buffer | In PBS, pH 7.2 (40% glycerol, 0.02% sodium azide) |

Storage Instruction

Store at 4°C. For long term storage store at -20°C.
Aliquot to avoid repeated freezing and thawing.

Note

This product contains sodium azide: a POISONOUS AND HAZARDOUS SUBSTANCE which should be handled by trained staff only.

Applications

- Immunohistochemistry (Formalin/PFA-fixed paraffin-embedded sections)

Immunohistochemical staining of human rectum with FAM208B polyclonal antibody (Cat # PAB23209) shows moderate cytoplasmic positivity in glandular cells at 1:50-1:200 dilution.

Gene Info — FAM208B

Entrez GeneID[54906](#)**Protein Accession#**[Q5VWN6](#)**Gene Name**

FAM208B

Gene Alias

DKFZp781E1986, FLJ20360, bA318E3.2

Gene Description

chromosome 10 open reading frame 18

Gene Ontology[Hyperlink](#)**Other Designations**

OTTHUMP00000019009|hypothetical protein LOC54906