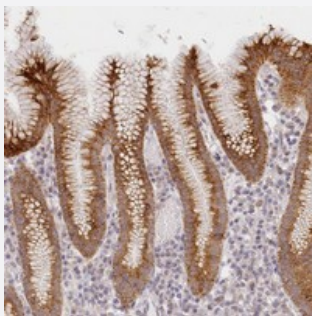


# MAP6D1 polyclonal antibody

Catalog # PAB23199      Size 100 uL

## Applications



### Immunohistochemistry (Formalin/PFA-fixed paraffin-embedded sections)

Immunohistochemical staining of human stomach with MAP6D1 polyclonal antibody (Cat # PAB23199) shows strong cytoplasmic positivity in glandular cells at 1:50-1:200 dilution.

## Specification

Product Description	Rabbit polyclonal antibody raised against recombinant MAP6D1.
Immunogen	Recombinant protein corresponding to amino acids of human MAP6D1.
Sequence	GKSSAQSSAPPAPGARGVYVLPIGDADAAA VTTSYRQEFQAWTGVKPSRSTKTKPARVITHTS GWDSSPGAGFQVPEVRKKFTPNPSAIFQASAP
Host	Rabbit
Reactivity	Human
Form	Liquid
Purification	Antigen affinity purification
Isotype	IgG
Recommend Usage	Immunohistochemistry (1:50-1:200) The optimal working dilution should be determined by the end user.
Storage Buffer	In PBS, pH 7.2 (40% glycerol, 0.02% sodium azide)

**Storage Instruction**

Store at 4°C. For long term storage store at -20°C.  
Aliquot to avoid repeated freezing and thawing.

**Note**

This product contains sodium azide: a POISONOUS AND HAZARDOUS SUBSTANCE which should be handled by trained staff only.

## Applications

- Immunohistochemistry (Formalin/PFA-fixed paraffin-embedded sections)

Immunohistochemical staining of human stomach with MAP6D1 polyclonal antibody (Cat # PAB23199) shows strong cytoplasmic positivity in glandular cells at 1:50-1:200 dilution.

## Gene Info — MAP6D1

**Entrez GeneID**[79929](#)**Protein Accession#**[Q9H9H5](#)**Gene Name**

MAP6D1

**Gene Alias**

FLJ12748, MAPO6D1, SL21

**Gene Description**

MAP6 domain containing 1

**Omim ID**[610593](#)**Gene Ontology**[Hyperlink](#)**Gene Summary**

This gene encodes a protein highly similar to the mouse MAP6 domain containing 1 protein, which is related to the STOP proteins. Based on the study of the mouse protein, the encoded protein may function as a calmodulin-regulated neuronal protein that binds and stabilizes microtubules but also associates with the Golgi membranes through N-terminal palmitoylation. [provided by RefSeq]

**Other Designations**

STOP-like protein 21