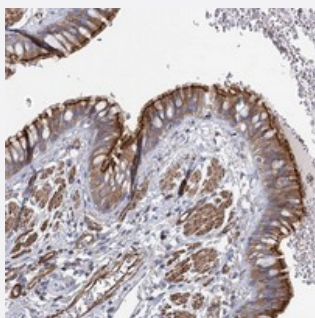


# C11orf60 polyclonal antibody

Catalog # PAB23184

Size 100 uL

## Applications



### Immunohistochemistry (Formalin/PFA-fixed paraffin-embedded sections)

Immunohistochemical staining of human bronchus with C11orf60 polyclonal antibody (Cat # PAB23184) shows moderate cytoplasmic and membrane positivity in respiratory epithelial cells at 1:500-1:1000 dilution.

## Specification

Product Description	Rabbit polyclonal antibody raised against recombinant C11orf60.
Immunogen	Recombinant protein corresponding to amino acids of human C11orf60.
Sequence	ETDSDSDDDDDEEHGAPLEGAYDPADYEHLPVSAEIKELFQYISRYTPQLIDL DHKLKPFIPDFIPAV GDIDAF LKVPRPDGKPDNLGLLV
Host	Rabbit
Reactivity	Human
Form	Liquid
Purification	Antigen affinity purification
Isotype	IgG
Recommend Usage	Immunohistochemistry (1:500-1:1000) The optimal working dilution should be determined by the end user.
Storage Buffer	In PBS, pH 7.2 (40% glycerol, 0.02% sodium azide)

**Storage Instruction**

Store at 4°C. For long term storage store at -20°C.  
Aliquot to avoid repeated freezing and thawing.

**Note**

This product contains sodium azide: a POISONOUS AND HAZARDOUS SUBSTANCE which should be handled by trained staff only.

## Applications

- Immunohistochemistry (Formalin/PFA-fixed paraffin-embedded sections)

Immunohistochemical staining of human bronchus with C11orf60 polyclonal antibody (Cat # PAB23184) shows moderate cytoplasmic and membrane positivity in respiratory epithelial cells at 1:500-1:1000 dilution.

## Gene Info — C11orf60

**Entrez GeneID**[56912](#)**Protein Accession#**[Q9NQC8](#)**Gene Name**

C11orf60

**Gene Alias**

C11orf2, FLJ21827

**Gene Description**

chromosome 11 open reading frame 60

**Gene Ontology**[Hyperlink](#)**Other Designations**

hypothetical protein LOC56912