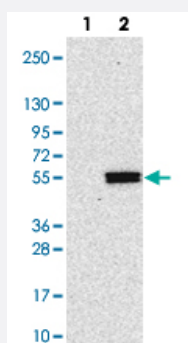


KTELC1 polyclonal antibody

Catalog # PAB23177 Size 100 uL

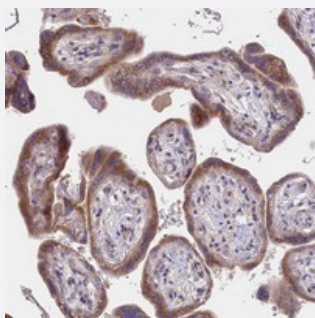
Applications



Western Blot (Transfected lysate)

Western blot analysis of Lane 1: Negative control (vector only transfected HEK293T lysate).

Lane 2: Over-expression lysate (Co-expressed with a C-terminal myc-DDK tag (~3.1 kDa) in mammalian HEK293T cells with KTELC1 polyclonal antibody (Cat # PAB23177).



Immunohistochemistry (Formalin/PFA-fixed paraffin-embedded sections)

Immunohistochemical staining of human placenta with KTELC1 polyclonal antibody (Cat # PAB23177) shows moderate cytoplasmic positivity in trophoblastic cells.

Specification

Product Description	Rabbit polyclonal antibody raised against recombinant KTELC1.
Immunogen	Recombinant protein corresponding to amino acids of human KTELC1.
Sequence	VQELLQFVKANDDVAQEIAERGSQFIRNHLQMDDITCYWENLLSEYSKFLSYNVTRRKG YDQII PKM LKTEL
Host	Rabbit
Reactivity	Human
Form	Liquid

Purification	Antigen affinity purification
Isotype	IgG
Recommend Usage	Immunohistochemistry (1:500-1:1000) The optimal working dilution should be determined by the end user.
Storage Buffer	In PBS, pH 7.2 (40% glycerol, 0.02% sodium azide)
Storage Instruction	Store at 4°C. For long term storage store at -20°C. Aliquot to avoid repeated freezing and thawing.
Note	This product contains sodium azide: a POISONOUS AND HAZARDOUS SUBSTANCE which should be handled by trained staff only.

Applications

- Western Blot (Transfected lysate)

Western blot analysis of Lane 1: Negative control (vector only transfected HEK293T lysate).

Lane 2: Over-expression lysate (Co-expressed with a C-terminal myc-DDK tag (~3.1 kDa) in mammalian HEK293T cells with KTELC1 polyclonal antibody (Cat # PAB23177).

- Immunohistochemistry (Formalin/PFA-fixed paraffin-embedded sections)

Immunohistochemical staining of human placenta with KTELC1 polyclonal antibody (Cat # PAB23177) shows moderate cytoplasmic positivity in trophoblastic cells.

Gene Info — KTELC1

Entrez GeneID	56983
Protein Accession#	Q8NBL1
Gene Name	KTELC1
Gene Alias	C3orf9, CLP46, KDELC1, MDS010, MDSRP, MGC32995, hCLP46
Gene Description	KTEL (Lys-Tyr-Glu-Leu) containing 1
Gene Ontology	Hyperlink
Gene Summary	46 kDa KDELC family like 1 myelodysplastic syndromes relative p010 protein
Other Designations	9630046K23Rik CAP10-like protein, 46 kDa KDELC family like 1 myelodysplastic syndromes relative p010 protein

Disease

- [Chromosome Aberrations](#)
- [Myelodysplastic Syndromes](#)