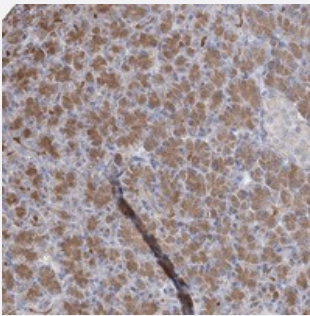


ARMC3 polyclonal antibody

Catalog # PAB23170 Size 100 uL

Applications



Immunohistochemistry (Formalin/PFA-fixed paraffin-embedded sections)

Immunohistochemical staining of human pancreas with ARMC3 polyclonal antibody (Cat # PAB23170) shows moderate cytoplasmic positivity in exocrine cells.

Specification

Product Description	Rabbit polyclonal antibody raised against recombinant ARMC3.
Immunogen	Recombinant protein corresponding to amino acids of human ARMC3.
Sequence	NAAAEADGIDPLINLLSSKRDGAIANAATVLTNMAMQEPLRLNIQNHDMHAIISPLRSANTVVQSKA ALAVTATACDVEARTELRNSGGLEPLV
Host	Rabbit
Reactivity	Human
Form	Liquid
Purification	Antigen affinity purification
Isotype	IgG
Recommend Usage	Immunohistochemistry (1:1000-1:2500) The optimal working dilution should be determined by the end user.
Storage Buffer	In PBS, pH 7.2 (40% glycerol, 0.02% sodium azide)

Storage Instruction

Store at 4°C. For long term storage store at -20°C.
Aliquot to avoid repeated freezing and thawing.

Note

This product contains sodium azide: a POISONOUS AND HAZARDOUS SUBSTANCE which should be handled by trained staff only.

Applications

- Immunohistochemistry (Formalin/PFA-fixed paraffin-embedded sections)

Immunohistochemical staining of human pancreas with ARMC3 polyclonal antibody (Cat # PAB23170) shows moderate cytoplasmic positivity in exocrine cells.

Gene Info — ARMC3

Entrez GeneID[219681](#)**Protein Accession#**[Q5W041](#)**Gene Name**

ARMC3

Gene Alias

FLJ25845, FLJ32827, KU-CT-1

Gene Description

armadillo repeat containing 3

Omim ID[611226](#)**Gene Ontology**[Hyperlink](#)**Gene Summary**

Armadillo/beta-catenin (CTNNB1; MIM 116806)-like (ARM) domains are imperfect 45-amino acid repeats involved in protein-protein interactions. ARM domain-containing proteins, such as ARMC3, function in signal transduction, development, cell adhesion and mobility, and tumor initiation and metastasis (Li et al., 2006 [PubMed 16915934]).[supplied by OMIM]

Other Designations

beta-catenin-like protein

Disease

- [Alzheimer Disease](#)
- [Genetic Predisposition to Disease](#)
- [Tobacco Use Disorder](#)