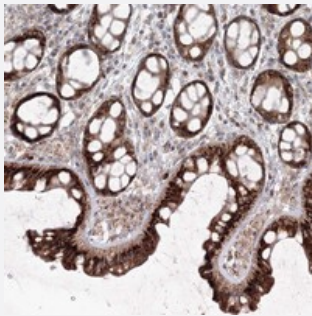


C10orf104 polyclonal antibody

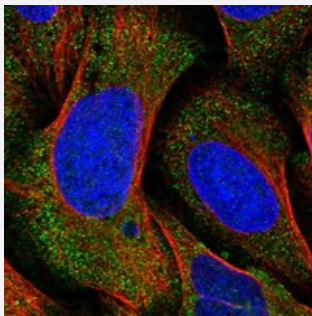
Catalog # PAB23169 Size 100 uL

Applications



Immunohistochemistry (Formalin/PFA-fixed paraffin-embedded sections)

Immunohistochemical staining of human colon with C10orf104 polyclonal antibody (Cat # PAB23169) shows strong cytoplasmic positivity in glandular cells.



Immunofluorescence

Immunofluorescent staining of human cell line U-2 OS with C10orf104 polyclonal antibody (Cat # PAB23169) at 1-4 ug/mL dilution shows positivity in cytoplasm.

Specification

Product Description	Rabbit polyclonal antibody raised against recombinant C10orf104.
Immunogen	Recombinant protein corresponding to amino acids of human C10orf104.
Sequence	VSGSSVTGSGFSVSDLAPPRKALFTYPKGAGEMLEDGSERFLCESVFSYQVASTLKQVKHDQQ VARMEKLAGLVEELEADEWRFKPIEQ
Host	Rabbit
Reactivity	Human
Form	Liquid

Purification	Antigen affinity purification
Isotype	IgG
Recommend Usage	Immunohistochemistry (1:50-1:200) Immunofluorescence (1-4 ug/mL) The optimal working dilution should be determined by the end user.
Storage Buffer	In PBS, pH 7.2 (40% glycerol, 0.02% sodium azide)
Storage Instruction	Store at 4°C. For long term storage store at -20°C. Aliquot to avoid repeated freezing and thawing.
Note	This product contains sodium azide: a POISONOUS AND HAZARDOUS SUBSTANCE which should be handled by trained staff only.

Applications

- Immunohistochemistry (Formalin/PFA-fixed paraffin-embedded sections)

Immunohistochemical staining of human colon with C10orf104 polyclonal antibody (Cat # PAB23169) shows strong cytoplasmic positivity in glandular cells.

- Immunofluorescence

Immunofluorescent staining of human cell line U-2 OS with C10orf104 polyclonal antibody (Cat # PAB23169) at 1-4 ug/mL dilution shows positivity in cytoplasm.

Gene Info — C10orf104

Entrez GeneID	119504
Protein Accession#	Q96DE5
Gene Name	C10orf104
Gene Alias	FLJ33728, bA570G20.3
Gene Description	chromosome 10 open reading frame 104
Gene Ontology	Hyperlink
Other Designations	OTTHUMP00000060576 hypothetical protein LOC119504