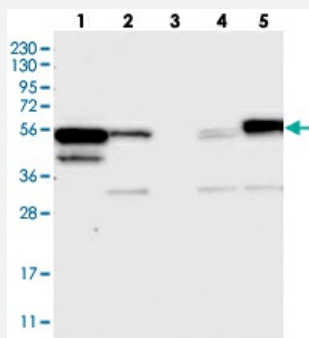


KBTBD4 polyclonal antibody

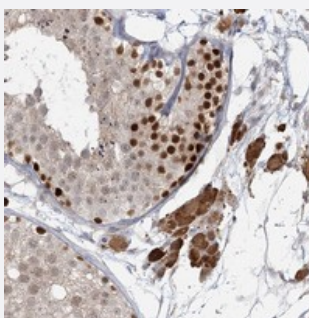
Catalog # PAB23166 Size 100 uL

Applications



Western Blot

Western blot analysis of Lane 1: RT-4, Lane 2: U-251 MG, Lane 3: Human Plasma, Lane 4: Liver, Lane 5: Tonsil with KBTBD4 polyclonal antibody (Cat # PAB23166) at 1:250-1:500 dilution.



Immunohistochemistry (Formalin/PFA-fixed paraffin-embedded sections)

Immunohistochemical staining of human testis with KBTBD4 polyclonal antibody (Cat # PAB23166) shows strong nuclear positivity in cells in seminiferous ducts and strong cytoplasmic staining in Leydig cells at 1:50-1:200 dilution.

Specification

Product Description	Rabbit polyclonal antibody raised against recombinant KBTBD4.
Immunogen	Recombinant protein corresponding to amino acids of human KBTBD4.
Sequence	DGVPCSQNPTAEIAEWINFNKEEREAFAESLRTSLKEIGENVHMLIGKESSRTHSLAVSLHCAEDD SISVSGQNSLCHQITAACKHGGDLVVG
Host	Rabbit
Reactivity	Human
Form	Liquid

Purification	Antigen affinity purification
Isotype	IgG
Recommend Usage	Immunohistochemistry (1:50-1:200) Western Blot (1:250-1:500) The optimal working dilution should be determined by the end user.
Storage Buffer	In PBS, pH 7.2 (40% glycerol, 0.02% sodium azide)
Storage Instruction	Store at 4°C. For long term storage store at -20°C. Aliquot to avoid repeated freezing and thawing.
Note	This product contains sodium azide: a POISONOUS AND HAZARDOUS SUBSTANCE which should be handled by trained staff only.

Applications

- Western Blot

Western blot analysis of Lane 1: RT-4, Lane 2: U-251 MG, Lane 3: Human Plasma, Lane 4: Liver, Lane 5: Tonsil with KBTBD4 polyclonal antibody (Cat # PAB23166) at 1:250-1:500 dilution.

- Immunohistochemistry (Formalin/PFA-fixed paraffin-embedded sections)

Immunohistochemical staining of human testis with KBTBD4 polyclonal antibody (Cat # PAB23166) shows strong nuclear positivity in cells in seminiferous ducts and strong cytoplasmic staining in Leydig cells at 1:50-1:200 dilution.

Gene Info — KBTBD4

Entrez GeneID	55709
Protein Accession#	Q9NVX7
Gene Name	KBTBD4
Gene Alias	BKLHD4, FLJ10450, HSPC252
Gene Description	kelch repeat and BTB (POZ) domain containing 4
Gene Ontology	Hyperlink
Other Designations	BTB and kelch domain containing 4