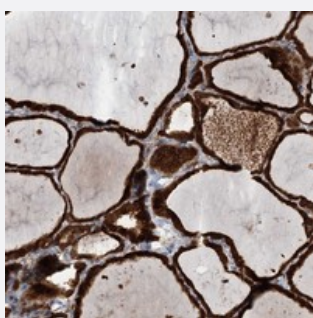


# LRIT2 polyclonal antibody

Catalog # PAB23165      Size 100 uL

## Applications



### Immunohistochemistry (Formalin/PFA-fixed paraffin-embedded sections)

Immunohistochemical staining of human thyroid gland with LRIT2 polyclonal antibody (Cat # PAB23165) shows strong cytoplasmic positivity in glandular cells at 1:50-1:200 dilution.

## Specification

Product Description	Rabbit polyclonal antibody raised against recombinant LRIT2.
Immunogen	Recombinant protein corresponding to amino acids of human LRIT2.
Sequence	LVISLHVQPAQALHAPDSLSIPSEGNAYIDLRVVKQTVHGILLEWLAVADTSKEEWFTLYIASDEAF RKEVVHIGPGINTYAVDDLLPGTKYE
Host	Rabbit
Reactivity	Human
Form	Liquid
Purification	Antigen affinity purification
Isotype	IgG
Recommend Usage	Immunohistochemistry (1:50-1:200) The optimal working dilution should be determined by the end user.
Storage Buffer	In PBS, pH 7.2 (40% glycerol, 0.02% sodium azide)

**Storage Instruction**

Store at 4°C. For long term storage store at -20°C.  
Aliquot to avoid repeated freezing and thawing.

**Note**

This product contains sodium azide: a POISONOUS AND HAZARDOUS SUBSTANCE which should be handled by trained staff only.

## Applications

- Immunohistochemistry (Formalin/PFA-fixed paraffin-embedded sections)

Immunohistochemical staining of human thyroid gland with LRIT2 polyclonal antibody (Cat # PAB23165) shows strong cytoplasmic positivity in glandular cells at 1:50-1:200 dilution.

## Gene Info — LRIT2

**Entrez GeneID**[340745](#)**Protein Accession#**[A6NDA9](#)**Gene Name**

LRIT2

**Gene Alias**

LRRC22

**Gene Description**

leucine-rich repeat, immunoglobulin-like and transmembrane domains 2

**Gene Ontology**[Hyperlink](#)**Gene Summary**

O

**Other Designations**

OTTHUMP00000019992|leucine rich repeat containing 22

## Disease

- [Tobacco Use Disorder](#)