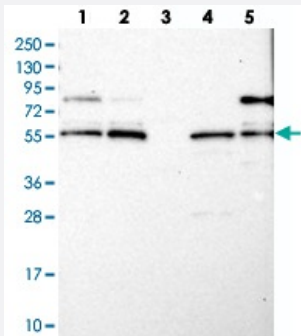


LRCH4 polyclonal antibody

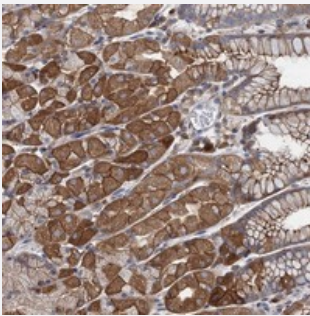
Catalog # PAB23148 Size 100 uL

Applications



Western Blot

Western blot analysis of Lane 1: RT-4, Lane 2: U-251 MG, Lane 3: Human Plasma, Lane 4: Liver, Lane 5: Tonsil with LRCH4 polyclonal antibody (Cat # PAB23148).



Immunohistochemistry (Formalin/PFA-fixed paraffin-embedded sections)

Immunohistochemical staining of human stomach with LRCH4 polyclonal antibody (Cat # PAB23148) shows strong cytoplasmic and membranous positivity in glandular cells.

Specification

Product Description	Rabbit polyclonal antibody raised against recombinant LRCH4.
Immunogen	Recombinant protein corresponding to amino acids of human LRCH4.
Sequence	ELSFRISLAREPRGPRERKEDGSADGDPVQIDFIDSHVPGEDEERGTVVEEQRPPPELSPGAGDERAPSSRRE
Host	Rabbit
Reactivity	Human
Form	Liquid

Purification	Antigen affinity purification
Isotype	IgG
Recommend Usage	Immunohistochemistry (1:50-1:200) Western Blot (1:250-1:500) The optimal working dilution should be determined by the end user.
Storage Buffer	In PBS, pH 7.2 (40% glycerol, 0.02% sodium azide)
Storage Instruction	Store at 4°C. For long term storage store at -20°C. Aliquot to avoid repeated freezing and thawing.
Note	This product contains sodium azide: a POISONOUS AND HAZARDOUS SUBSTANCE which should be handled by trained staff only.

Applications

- Western Blot

Western blot analysis of Lane 1: RT-4, Lane 2: U-251 MG, Lane 3: Human Plasma, Lane 4: Liver, Lane 5: Tonsil with LRCH4 polyclonal antibody (Cat # PAB23148).

- Immunohistochemistry (Formalin/PFA-fixed paraffin-embedded sections)

Immunohistochemical staining of human stomach with LRCH4 polyclonal antibody (Cat # PAB23148) shows strong cytoplasmic and membranous positivity in glandular cells.

Gene Info — LRCH4

Entrez GeneID	4034
Protein Accession#	O75427
Gene Name	LRCH4
Gene Alias	FLJ40101, FLJ46315, LRN, LRRN1, LRRN4, PP14183, SAP25
Gene Description	leucine-rich repeats and calponin homology (CH) domain containing 4
Gene Ontology	Hyperlink
Gene Summary	This gene encodes a protein that contains leucine-rich repeats (LRR) at its amino terminus and that is known to be involved in ligand binding. The carboxyl terminus may act as a membrane anchor. Identified structural elements suggest that the encoded protein resembles a receptor. [provided by RefSeq]
Other Designations	leucine rich repeat neuronal 4 leucine-rich neuronal protein sin3-associated polypeptide, 25kDa